

Human Gankyrin/PSMD10 antibody

Catalog Number: ATGA0386

PRODUCT INFORMATION

Catalog number

ATGA0386

Clone No.

AT1F4

Product type

Monoclonal Antibody

UnitProt No.

O75832

NCBI Accession No.

NP_002805

Alternative Names

proteasome 26S subunit non ATPase 10 (PSMD10) isoform 1, ankyrin repeat protein p28, Gankyrin, 26S proteasome non-ATPase regulatory subunit 10, 26S proteasome regulatory subunit p28, PSMD10.

PRODUCT SPECIFICATION

Antibody Host

Mouse

Reacts With

Human

Concentration

1mg/ml (determined by BCA assay)

Formulation

Liquid in. Phosphate-Buffered Saline (pH 7.4) with 0.02% Sodium Azide, 10% glycerol

Immunogen

Recombinant human PSMD10 (1-226aa) purified from E. coli

Isotype

IgG1 kappa

Purification Note

By protein-A affinity chromatography

Application

ELISA, WB, ICC/IF

Usage

The antibody has been tested by ELISA, Western blot analysis, ICC/IF and Flow cytometry to assure specificity and reactivity. Since application varies, however, each investigation should be titrated by the reagent to obtain optimal results.

Human Gankyrin/PSMD10 antibody

Catalog Number: ATGA0386

Storage

Can be stored at +2C to +8C for 1 week. For long term storage, aliquot and store at -20C to -80C. Avoid repeated freezing and thawing cycles.

BACKGROUND

Description

26S proteasome non-ATPase regulatory subunit 10 is an enzyme that in humans is a multicatalytic proteinase complex with a highly ordered structure composed of 2 complexes, a 20S core and a 19S regulator. Proteasomes are distributed throughout eukaryotic cells at a high concentration and cleave peptides in an ATP/ubiquitin-dependent process in a non-lysosomal pathway. An essential function of a modified proteasome, the immunoproteasome, is the processing of class I MHC peptides.

General References

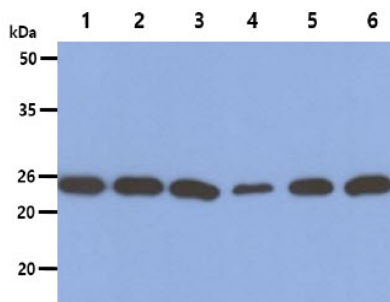
Hori T., et al. (1998) Gene. 216(1): 113-122.

Kaneko T., et al. (2009) Cell. 137: 914-925.

Wang J., et al. (2009) Cytogenet Genome Res. 125: 87-97.

DATA

Western blot analysis (WB)



The Cell lysates (40ug) were resolved by SDS-PAGE, transferred to PVDF membrane and probed with anti-human PSMD10 antibody (1:1000). Proteins were visualized using a goat anti-mouse secondary antibody conjugated to HRP and an ECL detection system.

Lane 1. : A549 cell lysate

Lane 2. : PC3 cell lysate

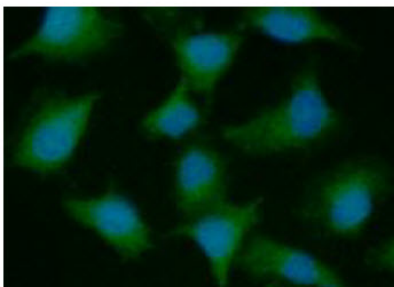
Lane 3. : K562 cell lysate

Lane 4. : HepG2 cell lysate

Lane 5. : HeLa cell lysate

Lane 6. : Jurkat cell lysate

Immunocytochemistry/Immunofluorescence (ICC/IF)



ICC/IF analysis of PSMD10 in A549 cells line, stained with DAPI (Blue) for nucleus staining and monoclonal anti-human PSMD10 antibody (1:100) with goat anti-mouse IgG-Alexa fluor 488 conjugate (Green).