

# Human AHSA1 antibody

Catalog Number: ATGA0388

## PRODUCT INFORMATION

---

**Catalog number**

ATGA0388

**Clone No.**

AT3E9

**Product type**

Monoclonal Antibody

**UnitProt No.**

O95433

**NCBI Accession No.**

NP\_036243

**Alternative Names**

Activator of Hsp90 ATPase-1 (AHA1, 19-337), AHA1, AHSA1, Activator of Hsp90 ATPase protein 1, Hsp90 co-chaperone AHA1, Activator of Hsp90 ATPase-1 Activator of 90 kDa heat shock protein ATPase homolog 1, Activator of heat shock 90kDa protein ATPase homolog 1, C14orf3, HSPC322, p38

## PRODUCT SPECIFICATION

---

**Antibody Host**

Mouse

**Reacts With**

Human

**Concentration**

1mg/ml (determined by BCA assay)

**Formulation**

Liquid in. Phosphate-Buffered Saline (pH 7.4) with 0.02% Sodium Azide, 10% glycerol

**Immunogen**

Recombinant human AHA1(19-337aa) purified from E. coli

**Isotype**

IgG2b kappa

**Purification Note**

By protein-A affinity chromatography

**Application**

ELISA, WB, ICC/IF

**Usage**

The antibody has been tested by ELISA, Western blot analysis and ICC/IF to assure specificity and reactivity. Since application varies, however, each investigation should be titrated by the reagent to obtain optimal results. Recommended starting dilution for Western blot analysis is 1:1000.

# Human AHA1 antibody

Catalog Number: ATGA0388

## Storage

Can be stored at +2C to +8C for 1 week. For long term storage, aliquot and store at -20C to -80C. Avoid repeated freezing and thawing cycles.

## BACKGROUND

### Description

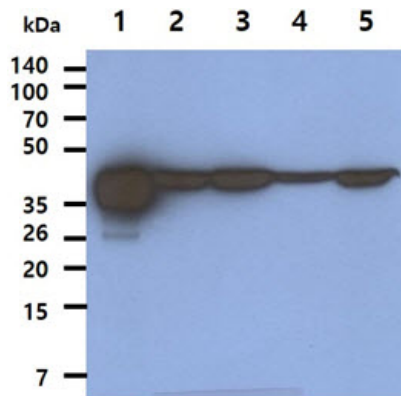
The Co-chaperone AHA1 (Activator of HSP90 ATPase-1) is proposed to function as an ATPase activating protein. May affect a step in the endoplasmic reticulum to Golgi trafficking. It expressed in numerous tissues, including brain, heart, skeletal muscle and kidney and, at lower levels, liver and placenta.

### General References

Meyer P., et al. (2004) EMBO. 23(6): 1402-1410.  
Siligardi G., et al. (2004) J Biol Chem. 270(50): 51989-51998.

## DATA

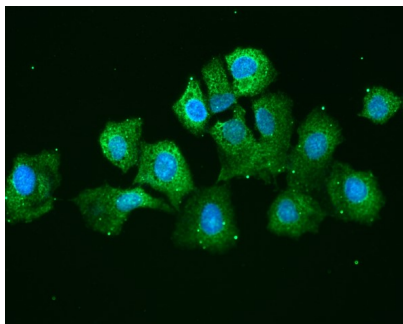
### Western blot analysis (WB)



The Recombinant Human AHA1 (50ng) and Cell lysates (40ug) were resolved by SDS-PAGE, transferred to PVDF membrane and probed with anti-human AHA1 antibody (1:1000). Proteins were visualized using a goat anti-mouse secondary antibody conjugated to HRP and an ECL detection system.

Lane 1. : AHA1 Recombinant protein  
Lane 2. : MCF-7 cell lysate  
Lane 3. : PC-3 cell lysate  
Lane 4. : 293T cell lysate  
Lane 5. : HeLa cell lysate

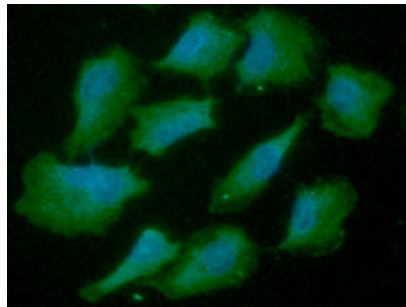
### Immunocytochemistry/Immunofluorescence (ICC/IF)



ICC/IF analysis of AHA1 in Hep3B cells line, stained with DAPI (Blue) for nucleus staining and monoclonal anti-human AHA1 antibody (1:100) with goat anti-mouse IgG-Alexa fluor 488 conjugate (Green).

## Human AHA1 antibody

Catalog Number: ATGA0388



ICC/IF analysis of AHA1 in A549 cells line, stained with DAPI (Blue) for nucleus staining and monoclonal anti-human AHA1 antibody (1:100) with goat anti-mouse IgG-Alexa fluor 488 conjugate (Green).