

# Human Glutathione S-transferase theta 2/GSTT2 antibody

Catalog Number: ATGA0391

## PRODUCT INFORMATION

---

**Catalog number**

ATGA0391

**Clone No.**

AT10H4

**Product type**

Monoclonal Antibody

**UnitProt No.**

P0CG29

**NCBI Accession No.**

NP\_000845

**Alternative Names**

Glutathione S-transferase theta 2, GSTT2B

## PRODUCT SPECIFICATION

---

**Antibody Host**

Mouse

**Reacts With**

Human

**Concentration**

1mg/ml (determined by BCA assay)

**Formulation**

Liquid in. Phosphate-Buffered Saline (pH 7.4) with 0.02% Sodium Azide, 10% glycerol

**Immunogen**

Recombinant human GSTT2 (1-244aa) purified from E. coli

**Isotype**

IgG2b kappa

**Purification Note**

By protein-A affinity chromatography

**Application**

ELISA, WB, ICC/IF, FACS

**Usage**

The antibody has been tested by ELISA, Western blot analysis, Flow cytometry and ICC/IF to assure specificity and reactivity. Since application varies, however, each investigation should be titrated by the reagent to obtain optimal results.

# Human Glutathione S-transferase theta 2/GSTT2 antibody

Catalog Number: ATGA0391

## Storage

Can be stored at +2C to +8C for 1 week. For long term storage, aliquot and store at -20C to -80C. Avoid repeated freezing and thawing cycles.

## BACKGROUND

### Description

Glutathione S-transferase theta-2 (GSTT2) is an enzyme catalyze the conjugation of reduced glutathione to a variety of electrophilic and hydrophobic compounds. Human GSTs can be divided into five main classes: Alpha, Mu, Pi, Theta, and Zeta. The theta class members GSTT1 and GSTT2 share 55% amino acid sequence identity and both are thought to have an important role in human carcinogenesis.

### General References

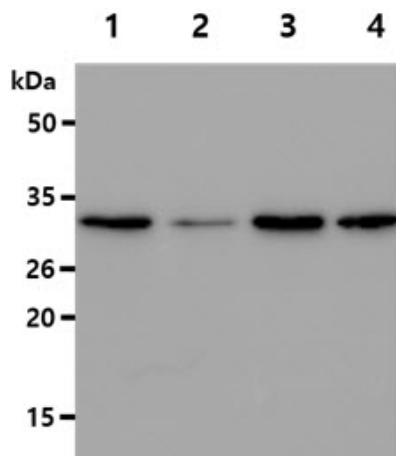
Hussey AJ., et al. (1992) *Biochem J.* 286(3): 929-935.

Whittington AT., et al. (1996) *Genomics.* 33(1): 105-111.

Webb G., et al. (1996) *Genomics.* 33(1): 121-123.

## DATA

### Western blot analysis (WB)



The cell lysates (40ug) were resolved by SDS-PAGE, transferred to PVDF membrane and probed with anti-human GSTT2 antibody (1:500). Proteins were visualized using a goat anti-mouse secondary antibody conjugated to HRP and an ECL detection system.

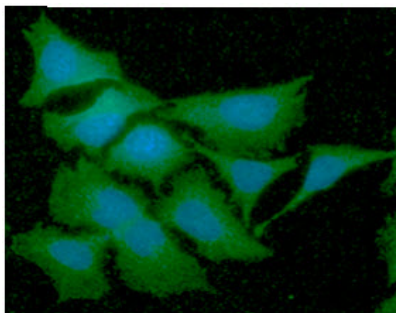
Lane 1.: HepG2 cell lysate

Lane 2.: NIH/3T3 cell lysate

Lane 3.: A549 cell lysate

Lane 4.: Raw264.7 cell lysate

### Immunocytochemistry/Immunofluorescence (ICC/IF)

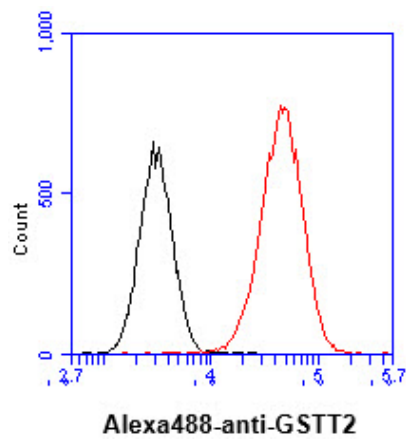


ICC/IF analysis of GSTT2 in HeLa cells line, stained with DAPI (Blue) for nucleus staining and monoclonal anti-human GSTT2 antibody (1:100) with goat anti-mouse IgG-Alexa fluor 488 conjugate (Green).

### Flow cytometry (FACS)

## Human Glutathione S-transferase theta 2/GSTT2 antibody

Catalog Number: ATGA0391



Flow cytometry analysis of GSTT2 in HeLa cell line, staining at 2-5ug for 1x10<sup>6</sup> cells (red line). The secondary antibody used goat anti-mouse IgG Alexa fluor 488 conjugate. Isotype control antibody was mouse IgG (black line).