

# Human ALDOC antibody

Catalog Number: ATGA0397

## PRODUCT INFORMATION

---

**Catalog number**

ATGA0397

**Clone No.**

AT2E11

**Product type**

Monoclonal Antibody

**UnitProt No.**

P09972

**NCBI Accession No.**

NP\_005156

**Alternative Names**

Aldolase C fructose-bisphosphate., Aldolase C, fructose-bisphosphate., ALDC

## PRODUCT SPECIFICATION

---

**Antibody Host**

Mouse

**Reacts With**

Human

**Concentration**

1mg/ml (determined by BCA assay)

**Formulation**

Liquid in. Phosphate-Buffered Saline (pH 7.4) with 0.02% Sodium Azide, 10% glycerol

**Immunogen**

Recombinant human ALDOC (1-364aa) purified from E. coli

**Isotype**

IgG1 kappa

**Purification Note**

By protein-A affinity chromatography

**Application**

ELISA,WB,ICC/IF

**Usage**

The antibody has been tested by ELISA, Western blot and ICC/IF analysis to assure specificity and reactivity. Since application varies, however, each investigation should be titrated by the reagent to obtain optimal results.

**Storage**

# Human ALDOC antibody

Catalog Number: ATGA0397

Can be stored at +2C to +8C for 1 week. For long term storage, aliquot and store at -20C to -80C. Avoid repeated freezing and thawing cycles.

## BACKGROUND

### Description

ALDOC, also known as aldolase C, is a member of the class I fructose-biphosphate aldolase family. This protein is a glycolytic enzyme that catalyzes the reversible aldol cleavage of fructose-1, 6-biphosphate and fructose 1-phosphate to dihydroxyacetone phosphate and either glyceraldehyde-3-phosphate or glyceraldehydes respectively. It is expressed specifically in the hippocampus and Purkinje cells of the brain.

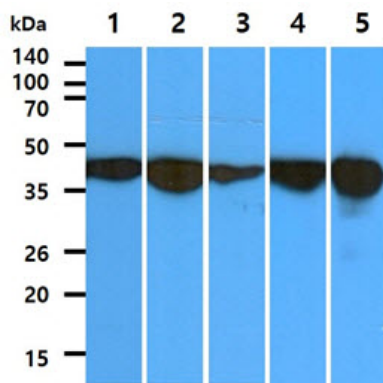
### General References

Wang CF., et al. (2007) *Anim Genet.* 38(3): 203-210.

Arakaki TL., et al. (2004) *Protein Sci.* 13(12): 3077-3084.

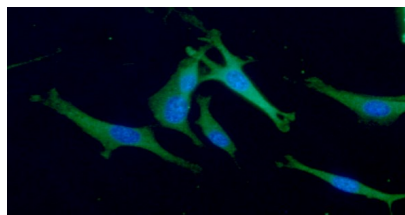
## DATA

### Western blot analysis (WB)

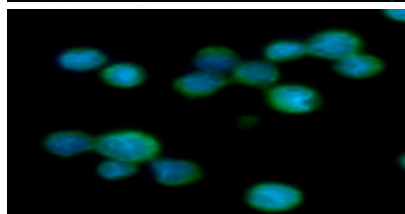


The cell and tissue lysates (40ug) were resolved by SDS-PAGE, transferred to PVDF membrane and probed with anti-human ALDOC antibody (1:1000). Proteins were visualized using a goat anti-mouse secondary antibody conjugated to HRP and an ECL detection system.  
Lane 1. : PC3 cell lysate  
Lane 2. : U87MG cell lysate  
Lane 3. : WiDr cell lysate  
Lane 4. : Jurkat cell lysate  
Lane 5. : Mouse brain tissue lysate

### Immunocytochemistry/Immunofluorescence (ICC/IF)



ICC/IF analysis of ALDOC in U87MG cells. The cell was stained with ATGA0397 (1:100). The secondary antibody (green) was used Alexa Fluor 488. DAPI was stained the cell nucleus (blue).



ICC/IF analysis of ALDOC in Jurkat cells. The cell was stained with ATGA0397 (1:100). The secondary antibody (green) was used Alexa Fluor 488. DAPI was stained the cell nucleus (blue).