

Human VTA1 antibody

Catalog Number: ATGA0403

PRODUCT INFORMATION

Catalog number

ATGA0403

Clone No.

AT14G10

Product type

Monoclonal Antibody

UnitProt No.

Q9NP79

NCBI Accession No.

NP_057569

Alternative Names

vacuolar protein sorting-associated protein VTA1 homolog, DRG-1, DRG1, LIP5, SBP1

PRODUCT SPECIFICATION

Antibody Host

Mouse

Reacts With

Human

Concentration

1mg/ml (determined by BCA assay)

Formulation

Liquid in. Phosphate-Buffered Saline (pH 7.4) with 0.02% Sodium Azide, 10% glycerol

Immunogen

Recombinant human VTA1 (1-307aa) purified from E. coli

Isotype

IgG1 kappa

Purification Note

By protein-A affinity chromatography

Application

ELISA, WB, ICC/IF, FACS

Usage

The antibody has been tested by ELISA, Western blot, ICC/IF and FACS analysis to assure specificity and reactivity. Since application varies, however, each investigation should be titrated by the reagent to obtain optimal results.

Human VTA1 antibody

Catalog Number: ATGA0403

Storage

Can be stored at +2C to +8C for 1 week. For long term storage, aliquot and store at -20C to -80C. Avoid repeated freezing and thawing cycles.

BACKGROUND

Description

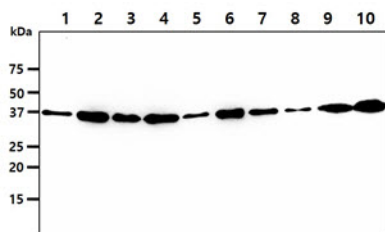
The VTA1 protein is involved in the endosomal multivesicular bodies (MVB) pathway. MVBs contain intraluminal vesicles (ILVs) that are generated by invagination and scission from the limiting membrane of the endosome and mostly are delivered to lysosomes enabling degradation of membrane proteins, such as stimulated growth factor receptors, lysosomal enzymes and lipids. Thought to be a cofactor of VPS4A/B, which catalyzes disassembles membrane-associated ESCRT-III assemblies. This protein is involved in the sorting and down-regulation of EGFR (By similarity) and involved in HIV-1 budding.

General References

- Jun Shi., et al. (2001) Brain Res. 910(1-2): 29-37.
Fujita H., et al. (2004) J Cell Sci. 117(Pt 14): 2997-3009.
Ward DM., et al. (2005) J Biol Chem. 280(11): 10548-55.

DATA

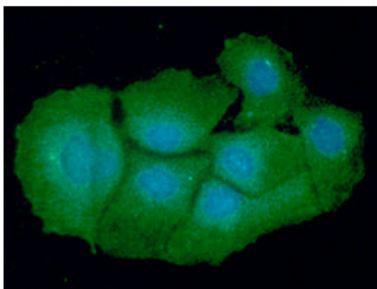
Western blot analysis (WB)



The cell lysates (40ug) were resolved by SDS-PAGE, transferred to PVDF membrane and probed with anti-human VTA1 antibody (1:1000). Proteins were visualized using a goat anti-mouse secondary antibody conjugated to HRP and an ECL detection system.

- Lane 1.: HepG2 cell lysate
Lane 2.: 293T cell lysate
Lane 3.: HeLa cell lysate
Lane 4.: MCF7 cell lysate
Lane 5.: A549 cell lysate
Lane 6.: Jurkat cell lysate
Lane 7.: K562 cell lysate
Lane 8.: LnCaP cell lysate
Lane 9.: U937 cell lysate
Lane 10.: A431 cell lysate

Immunocytochemistry/Immunofluorescence (ICC/IF)

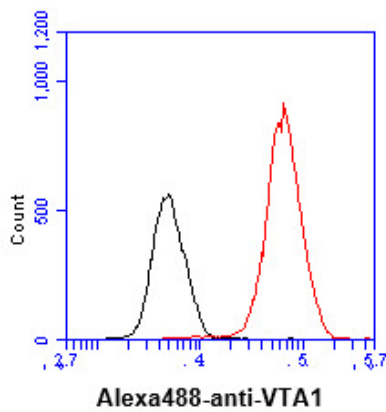


ICC/IF analysis of VTA1 in Hep3B cells. The cell was stained with ATGA0403 (1:100). The secondary antibody (green) was used Alexa Fluor 488. DAPI was stained the cell nucleus (blue).

Flow cytometry (FACS)

Human VTA1 antibody

Catalog Number: ATGA0403



Flow cytometry analysis of VTA1 in Hep3B cell line, staining at 2-5ug for 1×10^6 cells (red line). The secondary antibody used goat anti-mouse IgG Alexa fluor 488 conjugate. Isotype control antibody was mouse IgG (black line).