

Human AIF/AIFM1 antibody

Catalog Number: ATGA0411

PRODUCT INFORMATION

Catalog number

ATGA0411

Clone No.

AT22E9

Product type

Monoclonal Antibody

UnitProt No.

O95831

NCBI Accession No.

NP_665811

Alternative Names

Apoptosis-inducing factor 1 mitochondrial isoform 2 precursor, AIF, CMTX4, COWCK, COXPD6, PDCD8

PRODUCT SPECIFICATION

Antibody Host

Mouse

Reacts With

Human

Concentration

1mg/ml (determined by BCA assay)

Formulation

Liquid in. Phosphate-Buffered Saline (pH 7.4) with 0.02% Sodium Azide, 10% glycerol

Immunogen

Recombinant human AIFM1 (98-609aa) purified from E. coli

Isotype

IgG2a kappa

Purification Note

By protein-A affinity chromatography

Application

ELISA, WB, ICC/IF

Usage

The antibody has been tested by ELISA, Western blot and ICC/IF analysis to assure specificity and reactivity. Since application varies, however, each investigation should be titrated by the reagent to obtain optimal results.

Storage

Human AIF/AIFM1 antibody

Catalog Number: ATGA0411

Can be stored at +2C to +8C for 1 week. For long term storage, aliquot and store at -20C to -80C. Avoid repeated freezing and thawing cycles.

BACKGROUND

Description

Apoptosis-inducing factor 1, also known as AIFM1, is a mitochondrial protein that translocates to the nucleus upon induction of apoptosis. AIFM1 has been shown to cause DNA fragmentation and chromatin condensation and to induce the release of cytochrome c and caspase-9 from mitochondria. Bcl-2 overexpression has been shown to prevent the release of AIFM1 from mitochondria, but not to block its apoptogenic activity. Mutations in this gene cause combined oxidative phosphorylation deficiency 6, which results in a severe mitochondrial encephalomyopathy.

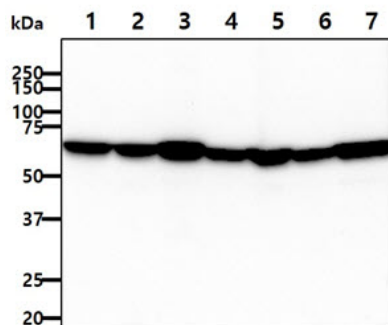
General References

Tang Y., et al. (2013) J Proteomics. 91C: 200-209.

Kim TW., et al. (2013) Cell Death Dis. 4: e919.

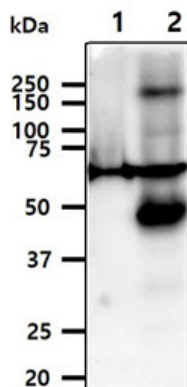
DATA

Western blot analysis (WB)



The cell lysates (40ug) were resolved by SDS-PAGE, transferred to PVDF membrane and probed with anti-human AIFM1 antibody (1:1000). Proteins were visualized using a goat anti-mouse secondary antibody conjugated to HRP and an ECL detection system.

- Lane 1. : Jurkat cell lysate
- Lane 2. : HeLa cell lysate
- Lane 3. : Hep3B cell lysate
- Lane 4. : Raji cell lysate
- Lane 5. : K562 cell lysate
- Lane 6. : MCF7 cell lysate
- Lane 7. : CTLL2 cell lysate



The tissue lysates (40ug) were resolved by SDS-PAGE, transferred to PVDF membrane and probed with anti-human AIFM1 antibody (1:1000). Proteins were visualized using a goat anti-mouse secondary antibody conjugated to HRP and an ECL detection system.

- Lane 1. : Mouse heart tissue lysate
- Lane 2. : Mouse liver tissue lysate

Immunocytochemistry/Immunofluorescence (ICC/IF)

Human AIF/AIFM1 antibody

Catalog Number: ATGA0411



ICC/IF analysis of AIFM1 in Hep3B cells. The cell was stained with ATGA0411 (1:100). The secondary antibody (green) was used Alexa Fluor 488. DAPI was stained the cell nucleus (blue).