

Human GPD1L antibody

Catalog Number: ATGA0415

PRODUCT INFORMATION

Catalog number

ATGA0415

Clone No.

AT14E2

Product type

Monoclonal Antibody

UnitProt No.

Q8N335

NCBI Accession No.

NP_055956

Alternative Names

Glycerol-3-phosphate dehydrogenase 1-like protein, GPD1-L

PRODUCT SPECIFICATION

Antibody Host

Mouse

Reacts With

Human

Concentration

1mg/ml (determined by BCA assay)

Formulation

Liquid in. Phosphate-Buffered Saline (pH 7.4) with 0.02% Sodium Azide, 10% glycerol

Immunogen

Recombinant human GPD1L (1-351aa) purified from E. coli

Isotype

IgG1 kappa

Purification Note

By protein-A affinity chromatography

Application

ELISA, WB, ICC/IF

Usage

The antibody has been tested by ELISA, Western blot analysis, Flow cytometry and ICC/IF to assure specificity and reactivity. Since application varies, however, each investigation should be titrated by the reagent to obtain optimal results.

Human GPD1L antibody

Catalog Number: ATGA0415

Storage

Can be stored at +2C to +8C for 1 week. For long term storage, aliquot and store at -20C to -80C. Avoid repeated freezing and thawing cycles.

BACKGROUND

Description

GPD1L is converts sn-glycerol 3-phosphate to glycerone phosphate. This protein is found in the cytoplasm, associated with the plasma membrane, where it binds the sodium channel, voltage-gated, type V, alpha subunit (SCN5A). GPD1L is thought to affect trafficking of the cardiac sodium current to the cell surface. Mutations in GPD1L are the cause of sudden infant death syndrome (SIDS) and Brugada syndrome type 2, an autosomal dominant tachyarrhythmia.

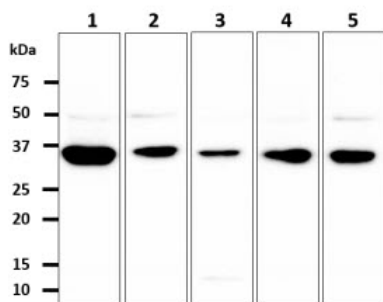
General References

Valdivia CR., et al. (2009) Am. J. Physiol. 297: H1446-H1452.

Van Norstrand DW., et al. (2007) Circulation. 116: 2253-2259.

DATA

Western blot analysis (WB)



The cell lysates (40ug) were resolved by SDS-PAGE, transferred to PVDF membrane and probed with anti-human GPD1L antibody (1:500). Proteins were visualized using a goat anti-mouse secondary antibody conjugated to HRP and an ECL detection system.

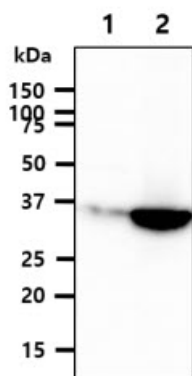
Lane 1. : MCF7 cell lysate

Lane 2. : 293T cell lysate

Lane 3. : Jurkat cell lysate

Lane 4 : SW480 cell lysate

Lane 5 : PC3 cell lysate



The cell lysates (40ug) were resolved by SDS-PAGE, transferred to PVDF membrane and probed with anti-human GPD1L antibody (1:1000). Proteins were visualized using a goat anti-mouse secondary antibody conjugated to HRP and an ECL detection system.

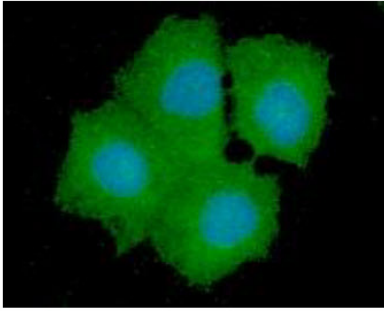
Lane 1. : 293T cell lysate

Lane 2. : GPD1L Transfected 293T cell lysate

Immunocytochemistry/Immunofluorescence (ICC/IF)

Human GPD1L antibody

Catalog Number: ATGA0415



ICC/IF analysis of GPD1L in Hep3B cells line, stained with DAPI (Blue) for nucleus staining and monoclonal anti-human GPD1L antibody (1:100) with goat anti-mouse IgG-Alexa fluor 488 conjugate (Green).