

# Human ASS1 antibody

Catalog Number: ATGA0416

## PRODUCT INFORMATION

---

**Catalog number**

ATGA0416

**Clone No.**

AT1G11

**Product type**

Monoclonal Antibody

**UnitProt No.**

P00966

**NCBI Accession No.**

NP\_000041

**Alternative Names**

Argininosuccinate synthase, ASS, CTLN1, Argininosuccinate synthase

## PRODUCT SPECIFICATION

---

**Antibody Host**

Mouse

**Reacts With**

Human

**Concentration**

1mg/ml (determined by BCA assay)

**Formulation**

Liquid in. Phosphate-Buffered Saline (pH 7.4) with 0.02% Sodium Azide, 10% glycerol

**Immunogen**

Recombinant human ASS1 (1-412aa) purified from E. coli

**Isotype**

IgG2a kappa

**Purification Note**

By protein-A affinity chromatography

**Application**

ELISA, WB, ICC/IF

**Usage**

The antibody has been tested by ELISA, Western blot analysis, Flow cytometry and ICC/IF to assure specificity and reactivity. Since application varies, however, each investigation should be titrated by the reagent to obtain optimal results.

# Human ASS1 antibody

Catalog Number: ATGA0416

## Storage

Can be stored at +2C to +8C for 1 week. For long term storage, aliquot and store at -20C to -80C. Avoid repeated freezing and thawing cycles.

## BACKGROUND

### Description

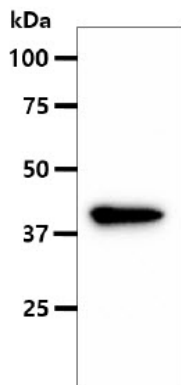
ASS1 (argininosuccinate synthase or citrulline-aspartate ligase) belongs to the argininosuccinate synthase family. ASS1 is a urea cycle enzyme that is essential in the conversion of nitrogen from ammonia and aspartate to urea. A deficiency of ASS1 causes citrullinemia (CTLN1), an autosomal recessive disease which is characterized by severe vomiting spells and mental retardation. Cells deficient in ASS1 must absorb the arginine they need for growth from circulating blood.

### General References

- Chalikiopoulou C., et al. (2016) *Pharmacogenomics*. (4): 393-403.
- Rabinovich S., et al. (2015) *Nature*. 527(7578): 379-83.
- Walts AE., et al. (2015) *J Cancer Res Clin Oncol*. 141(8): 1363-9.

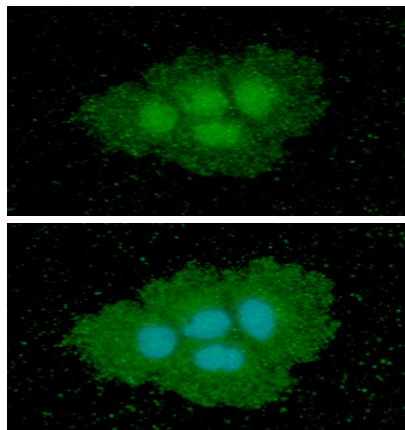
## DATA

### Western blot analysis (WB)



The MCF-7 cell lysate (40ug) were resolved by SDS-PAGE, transferred to PVDF membrane and probed with anti-human ASS1 antibody (1:500). Proteins were visualized using a goat anti-mouse secondary antibody conjugated to HRP and an ECL detection system.

### Immunocytochemistry/Immunofluorescence (ICC/IF)



ICC/IF analysis of ASS1 in Hep3B cells line, stained with DAPI (Blue) for nucleus staining and monoclonal anti-human ASS1 antibody (1:100) with goat anti-mouse IgG-Alexa fluor 488 conjugate (Green).