

Human Podoplanin/PDPN antibody

Catalog Number: ATGA0418

PRODUCT INFORMATION

Catalog number

ATGA0418

Clone No.

AT56F7

Product type

Monoclonal Antibody

UnitProt No.

Q86YL7

NCBI Accession No.

NP_006465

Alternative Names

TIA2, T1A, T1 ALPHA GENE, T1 alpha, Podoplanin, PDPN, PA2.26 antigen, OTTHuMP00000044504, OTTHuMP00000009640, OTS8, Lung type I cell membrane-associated glycoprotein isoform a, Lung type I cell membrane associated glycoprotein isoform a AGGRuS, Lung type I cell membrane associated glycoprotein, hT1alpha2, hT1alpha1, HT1A-1, GP40, Gp38, GP36, Glycoprotein 36 KD

PRODUCT SPECIFICATION

Antibody Host

Mouse

Reacts With

Human

Concentration

1mg/ml (determined by BCA assay)

Formulation

Liquid in. Phosphate-Buffered Saline (pH 7.4) with 0.02% Sodium Azide, 10% glycerol

Immunogen

Recombinant human PDPN (99-207aa) purified from E. coli

Isotype

IgG1 kappa

Purification Note

By protein-A affinity chromatography

Application

ELISA, WB, ICC/IF

Usage

The antibody has been tested by ELISA, Western blot analysis, Flow cytometry and ICC/IF to assure specificity and reactivity. Since application varies, however, each investigation should be titrated by the reagent to obtain

Human Podoplanin/PDPN antibody

Catalog Number: ATGA0418

optimal results.

Storage

Can be stored at +2C to +8C for 1 week. For long term storage, aliquot and store at -20C to -80C. Avoid repeated freezing and thawing cycles.

BACKGROUND

Description

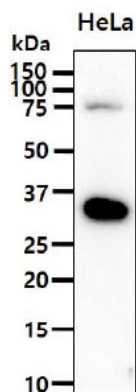
Podoplanin (PDPN) is a small mucin-like transmembrane protein, widely expressed in various specialized cell types throughout the body. This is a type-I integral membrane glycoprotein with diverse distribution in human tissues. The physiological function of this protein may be related to its mucin-type character. The homologous protein in other species has been described as a differentiation antigen and influenza-virus receptor.

General References

Wicki A., et al. (2006) Br J Cancer. 96(1): 1-5.
Zimmer G., et al. (1999) Biochem J. 341, 277-84.

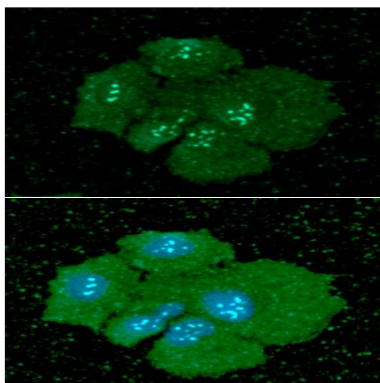
DATA

Western blot analysis (WB)



The HeLa cell lysate (40ug) was resolved by SDS-PAGE, transferred to PVDF membrane and probed with anti-human PDPN antibody (1:1000). Proteins were visualized using a goat anti-mouse secondary antibody conjugated to HRP and an ECL detection system.

Immunocytochemistry/Immunofluorescence (ICC/IF)



ICC/IF analysis of PDPN in Hep3B cells. The cell was stained with ATGA0418 (1:100). The secondary antibody (green) was used Alexa Fluor 488. DAPI was stained the cell nucleus (blue).