

Human CapG antibody

Catalog Number: ATGA0420

PRODUCT INFORMATION

Catalog number

ATGA0420

Clone No.

AT1D10

Product type

Monoclonal Antibody

UnitProt No.

P40121

NCBI Accession No.

AAH00728

Alternative Names

Macrophage-capping protein, MCP, AFCP, Macrophage-capping protein Actin capping protein GCAP39, Actin regulatory protein CAP G, CAPG, Capping protein (actin filament) gelsolin like, Capping protein gelsolin like, gCap39, Gelsolin like capping protein, Macrophage capping protein, mbh1, Myc basic motif homolog 1.

PRODUCT SPECIFICATION

Antibody Host

Mouse

Reacts With

Human

Concentration

1mg/ml (determined by BCA assay)

Formulation

Liquid in. Phosphate-Buffered Saline (pH 7.4) with 0.02% Sodium Azide, 10% glycerol

Immunogen

Recombinant human CAPG (1-348aa) purified from E. coli

Isotype

IgG2b kappa

Purification Note

By protein-A affinity chromatography

Application

ELISA, WB, ICC/IF

Usage

The antibody has been tested by ELISA, Western blot analysis and ICC/IF to assure specificity and reactivity. Since application varies, however, each investigation should be titrated by the reagent to obtain optimal results.

Human CapG antibody

Catalog Number: ATGA0420

Storage

Can be stored at +2C to +8C for 1 week. For long term storage, aliquot and store at -20C to -80C. Avoid repeated freezing and thawing cycles.

BACKGROUND

Description

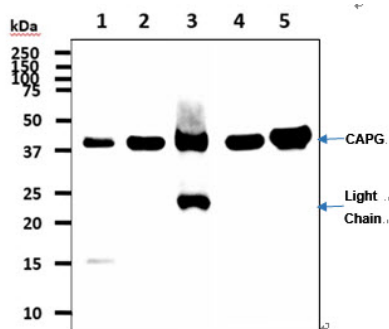
Macrophage-capping protein, also known as CAPG, belongs to the gelsolin/villin family of actin-regulatory proteins. CAPG is a calcium-sensitive DNA-binding protein that plays a role in macrophage function. It is expressed in macrophages and macrophage-like cells and can localize both to the nucleus and the cytoplasm. This protein reversibly blocks the barbed ends of F-actin filaments in a Ca²⁺ and phosphoinositide-regulated manner, but does not sever preformed actin filaments.

General References

Kumar A., et al. (2015) Mol Cell Endocrinol. 404: 91-101.
Dabiri G A., et al. (1992) J Biol Chem. 267: 16545-16552.

DATA

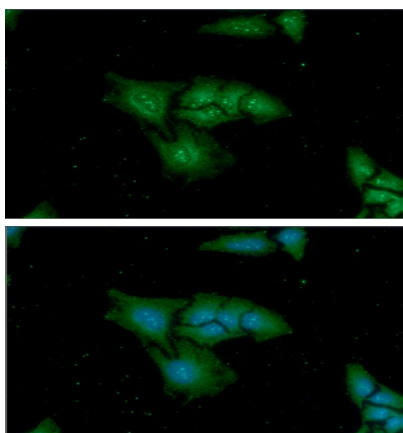
Western blot analysis (WB)



The cell lysates (40ug) were resolved by SDS-PAGE, transferred to PVDF membrane and probed with anti-human CAPG antibody (1:1000). Proteins were visualized using a goat anti-mouse secondary antibody conjugated to HRP and an ECL detection system.

Lane 1.: HeLa cell lysate
Lane 2.: NIH3T3 cell lysate
Lane 3.: Mouse spleen tissue lysate
Lane 4.: THP-1 cell lysate
Lane 5.: Raw 264.7 cell lysate

Immunocytochemistry/Immunofluorescence (ICC/IF)



ICC/IF analysis of CAPG in HeLa cells line, stained with DAPI (Blue) for nucleus staining and monoclonal anti-human CAPG antibody (1:100) with goat anti-mouse IgG-Alexa fluor 488 conjugate (Green).