

Human Pontin/RUVBL1 antibody

Catalog Number: ATGA0423

PRODUCT INFORMATION

Catalog number

ATGA0423

Clone No.

AT1D6

Product type

Monoclonal Antibody

UnitProt No.

Q9Y265

NCBI Accession No.

NP_003698

Alternative Names

49 kDa TATA box-binding protein-interacting protein, 49 kDa TBP-interacting protein, 54 kDa erythrocyte cytosolic protein, ECP-54, INO80 complex subunit H, INO80H, NMP 238, Nuclear matrix protein 238, Pontin 52, RuvB like AAA ATPase 1, RuvB-like 1, RVB1, TAP54-alpha, TIH1, TIP49a, TIP60-associated protein 54-alpha

PRODUCT SPECIFICATION

Antibody Host

Mouse

Reacts With

Human

Concentration

1mg/ml (determined by BCA assay)

Formulation

Liquid in. Phosphate-Buffered Saline (pH 7.4) with 0.02% Sodium Azide, 10% glycerol

Immunogen

Recombinant human RuVBL1 (1-456aa) purified from E. coli

Isotype

IgG2a kappa

Purification Note

By protein-A affinity chromatography

Application

ELISA, WB, ICC/IF

Usage

The antibody has been tested by ELISA, Western blot analysis, Flow cytometry and ICC/IF to assure specificity and reactivity. Since application varies, however, each investigation should be titrated by the reagent to obtain optimal results.

Human Pontin/RUVBL1 antibody

Catalog Number: ATGA0423

Storage

Can be stored at +2C to +8C for 1 week. For long term storage, aliquot and store at -20C to -80C. Avoid repeated freezing and thawing cycles.

BACKGROUND

Description

RuVBL1, also known as TIP49A, is a component of the NuA4 histone acetyltransferase complex which is involved in transcriptional activation of select genes principally by acetylation of nucleosomal histone H4 and H2A. This complex may be required for the activation of transcriptional programs associated with oncogene and proto oncogene mediated growth induction, tumor suppressor mediated growth arrest.

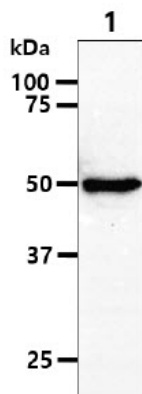
General References

Jha S., et al. (2009) Mol Cell. 34(5): 521-33.

Haurie V., et al. (2009) Hepatology. 50(6): 1871-83.

DATA

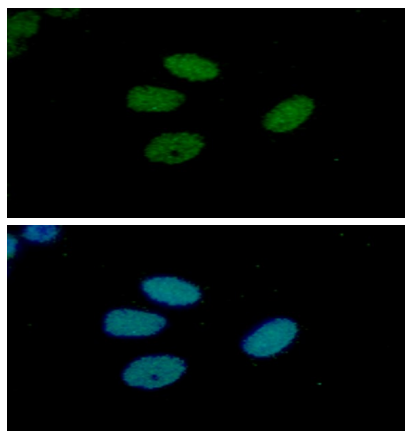
Western blot analysis (WB)



The cell lysate (40ug) were resolved by SDS-PAGE, transferred to PVDF membrane and probed with anti-human RuVBL1 antibody (1:1000). Proteins were visualized using a goat anti-mouse secondary antibody conjugated to HRP and an ECL detection system.

Lane 1 : Raji cell lysate

Immunocytochemistry/Immunofluorescence (ICC/IF)



ICC/IF analysis of RuVBL in HeLa cells line, stained with DAPI (Blue) for nucleus staining and monoclonal anti-human RuVBL antibody (1:100) with goat anti-mouse IgG-Alexa fluor 488 conjugate (Green).