

Human UDP-glucose dehydrogenase/UGDH antibody

Catalog Number: ATGA0425

PRODUCT INFORMATION

Catalog number

ATGA0425

Clone No.

AT2G11

Product type

Monoclonal Antibody

UnitProt No.

O60701

NCBI Accession No.

NP_003350

Alternative Names

UDP-glucose 6-dehydrogenase, UDP-Glc dehydrogenase, UDP-GlcDH, UDPGDH

PRODUCT SPECIFICATION

Antibody Host

Mouse

Reacts With

Human

Concentration

1mg/ml (determined by BCA assay)

Formulation

Liquid in. Phosphate-Buffered Saline (pH 7.4) with 0.02% Sodium Azide, 10% glycerol

Immunogen

Recombinant human UGDH (1-494aa) purified from E. coli

Isotype

IgG2b kappa

Purification Note

By protein-A affinity chromatography

Application

ELISA, WB, ICC/IF

Usage

The antibody has been tested by ELISA, Western blot analysis, Flow cytometry and ICC/IF to assure specificity and reactivity. Since application varies, however, each investigation should be titrated by the reagent to obtain optimal results.

Human UDP-glucose dehydrogenase/UGDH antibody

Catalog Number: ATGA0425

Storage

Can be stored at +2C to +8C for 1 week. For long term storage, aliquot and store at -20C to -80C. Avoid repeated freezing and thawing cycles.

BACKGROUND

Description

UGDH is a member of the UDP-glucose/GDP-mannose dehydrogenase family and is a ubiquitously expressed protein most abundant in the liver. This protein converts UDP-glucose to UDP-glucuronate and thereby participates in the biosynthesis of glycosaminoglycans such as hyaluronan, chondroitin sulfate, and heparan sulfate. These glycosylated compounds are common components of the extracellular matrix and likely play roles in signal transduction, cell migration, and cancer growth and metastasis.

General References

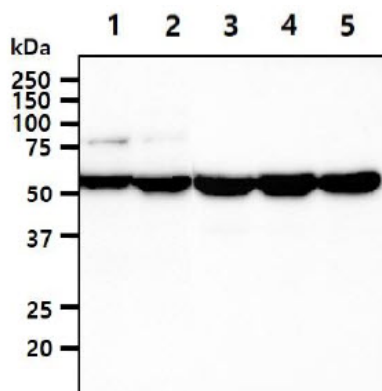
Bontemps Y., et al. (2003) J Biol Chem. 278(24): 21566-75.

Vatsyayan J., et al. (2006) Biosci Biotechnol Biochem. 70(2): 401-10.

Egger S., et al. (2011) J Biol Chem. 286(27): 23877-87.

DATA

Western blot analysis (WB)



The cell lysates (40ug) were resolved by SDS-PAGE, transferred to PVDF membrane and probed with anti-human UGDH antibody (1:1000). Proteins were visualized using a goat anti-mouse secondary antibody conjugated to HRP and an ECL detection system.

Lane 1.: HeLa cell lysate

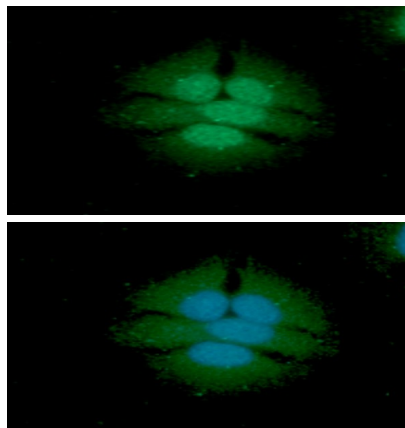
Lane 2.: NIH-3T3 cell lysate

Lane 3.: HepG2 cell lysate

Lane 4.: A549 cell lysate

Lane 5.: MCF7 cell lysate

Immunocytochemistry/Immunofluorescence (ICC/IF)



ICC/IF analysis of UGDH in HeLa cells line, stained with DAPI (Blue) for nucleus staining and monoclonal anti-human UGDH antibody (1:100) with goat anti-mouse IgG-Alexa fluor 488 conjugate (Green).