

Human Thioredoxin-2 antibody

Catalog Number: ATGA0427

PRODUCT INFORMATION

Catalog number

ATGA0427

Clone No.

AT1B1

Product type

Monoclonal Antibody

UnitProt No.

Q99757

NCBI Accession No.

NP_036605

Alternative Names

MTRX, TRX2, MT-TRX, Thioredoxin2, mitochondrial thioredoxin, thioredoxin 2 precursor, Thioredoxin mitochondrial, TRX 2, TXN 2, TXN2, Thioredoxin-2

PRODUCT SPECIFICATION

Antibody Host

Mouse

Reacts With

Human

Concentration

1mg/ml (determined by BCA assay)

Formulation

Liquid in. Phosphate-Buffered Saline (pH 7.4) with 0.02% Sodium Azide, 10% glycerol

Immunogen

Recombinant human Thioredoxin2 (60-166aa) purified from E. coli

Isotype

IgG2b kappa

Purification Note

By protein-A affinity chromatography

Application

ELISA, WB, ICC/IF

Usage

The antibody has been tested by ELISA, Western blot analysis, Flow cytometry and ICC/IF to assure specificity and reactivity. Since application varies, however, each investigation should be titrated by the reagent to obtain optimal results.

Human Thioredoxin-2 antibody

Catalog Number: ATGA0427

Storage

Can be stored at +2C to +8C for 1 week. For long term storage, aliquot and store at -20C to -80C. Avoid repeated freezing and thawing cycles.

BACKGROUND

Description

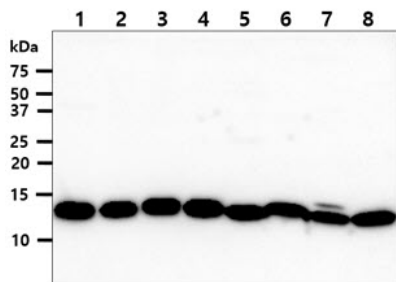
Thioredoxin (Trx) is a low molecular weight redox protein. Trx contains a redox active disulfide/dithiol group within the conserved Cys-Gly-Pro-Cys active site. The Thioredoxin2 may play important roles in the regulation of the mitochondrial membrane potential and in protection against oxidant-induced apoptosis.

General References

- Wang Z., et al. (2007) Rapid Commun Mass Spectrom. 21(22): 3658-66.
- Zhang H., et al. (2007) Arch Biochem biophys. 465(1): 119-26.
- Holmgren, A. (1979) Journal of Biological Chemistry. 254, 9627-9632.

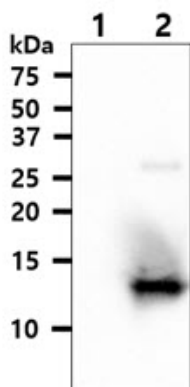
DATA

Western blot analysis (WB)



The cell lysates (40ug) were resolved by SDS-PAGE, transferred to PVDF membrane and probed with anti-human Thioredoxin2 antibody (1:1000). Proteins were visualized using a goat anti-mouse secondary antibody conjugated to HRP and an ECL detection system.

- Lane 1 : HepG2 cell lysate
- Lane 2 : HeLa cell lysate
- Lane 3 : Raji cell lysate
- Lane 4 : K562 cell lysate
- Lane 5 : Jurkat cell lysate
- Lane 6 : A431 cell lysate
- Lane 7 : MCF7 cell lysate
- Lane 8 : THP1 cell lysate



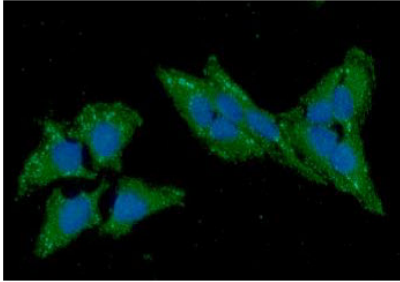
Recombinant protein (50ng) were resolved by SDS-PAGE, transferred to PVDF membrane and probed with anti-human Thioredoxin2 antibody (1:1000). Proteins were visualized using a goat anti-mouse secondary antibody conjugated to HRP and an ECL detection system.

- Lane 1 : Recombinant human Thioredoxin1 protein
- Lane 2 : Recombinant human Thioredoxin2 protein

Immunocytochemistry/Immunofluorescence (ICC/IF)

Human Thioredoxin-2 antibody

Catalog Number: ATGA0427



ICC/IF analysis of TXN2 in HeLa cells line, stained with DAPI (Blue) for nucleus staining and monoclonal anti-human TXN2 antibody (1:100) with goat anti-mouse IgG-Alexa fluor 488 conjugate (Green).