

Human CDC37 antibody

Catalog Number: ATGA0428

PRODUCT INFORMATION

Catalog number

ATGA0428

Clone No.

AT3G7

Product type

Monoclonal Antibody

UnitProt No.

Q16543

NCBI Accession No.

NP_008996

Alternative Names

Cell division cycle 37 homolog, P50CDC37, CDC37, Cell division cycle 37 homolog, Cell division cycle 37 homolog S cerevisiae hypothetical protein CDC37, CDC 37, CDC37 cell division cycle 37 homolog, Cdc37 homolog, CDC37 protein, Hsp90 chaperone protein kinase targeting subunit, Hsp90 chaperone protein kinase targeting subunit p50Cdc37, Hsp90 co chaperone Cdc37, p50, p50Cdc37.

PRODUCT SPECIFICATION

Antibody Host

Mouse

Reacts With

Human

Concentration

1mg/ml (determined by BCA assay)

Formulation

Liquid in. Phosphate-Buffered Saline (pH 7.4) with 0.02% Sodium Azide, 10% glycerol

Immunogen

Recombinant human CDC37 (1-378aa) purified from E. coli

Isotype

IgG1 kappa

Purification Note

By protein-A affinity chromatography

Application

ELISA, WB, ICC/IF

Usage

The antibody has been tested by ELISA, Western blot analysis and ICC/IF to assure specificity and reactivity. Since application varies, however, each investigation should be titrated by the reagent to obtain optimal results.

Human CDC37 antibody

Catalog Number: ATGA0428

Storage

Can be stored at +2C to +8C for 1 week. For long term storage, aliquot and store at -20C to -80C. Avoid repeated freezing and thawing cycles.

BACKGROUND

Description

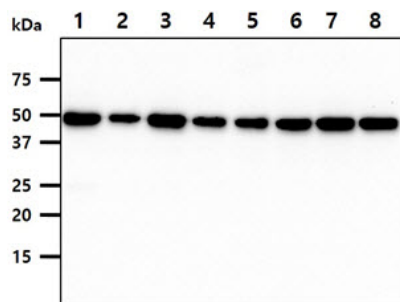
The protein encoded by this gene is highly similar to CDC37, a cell division cycle control protein of *Saccharomyces cerevisiae*. This protein is a molecular chaperone with specific function in cell signal transduction. It has been shown to form complex with Hsp90 and a variety of protein kinases including CDK4, CDK6, SRC, RAF1, MOK, as well as eIF-2 alpha kinases. It is thought to play a critical role in directing Hsp90 to its target kinases.

General References

Quotti Tubi, et al. (2013) *J Hematol Oncol.* 6: 78.
Manni S., et al. (2012) *Clin Cancer Res.* 18: 1888-900.

DATA

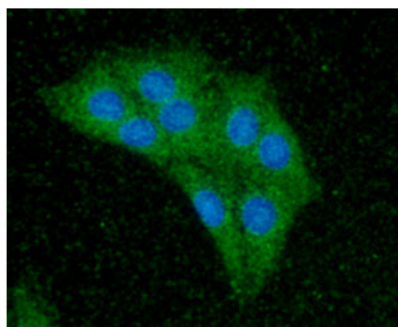
Western blot analysis (WB)



The cell line and tissue lysates (40ug) were resolved by SDS-PAGE, transferred to PVDF membrane and probed with anti-human CDC37 antibody (1:1000). Proteins were visualized using a goat anti-mouse secondary antibody conjugated to HRP and an ECL detection system.

- Lane 1. : Jurkat cell lysate
- Lane 2. : A431 cell lysate
- Lane 3. : K562 cell lysate
- Lane 4. : LnCap cell lysate
- Lane 5. : SW480 cell lysate
- Lane 6. : HeLa cell lysate
- Lane 7. : MCF7 cell lysate
- Lane 8. : 293T cell lysate

Immunocytochemistry/Immunofluorescence (ICC/IF)



ICC/IF analysis of CDC37 in Balb/3T3 cells line, stained with DAPI (Blue) for nucleus staining and monoclonal anti-human CDC37 antibody (1:100) with goat anti-mouse IgG-Alexa fluor 488 conjugate (Green).