

Human Cystatin A antibody

Catalog Number: ATGA0432

PRODUCT INFORMATION

Catalog number

ATGA0432

Clone No.

AT1B12

Product type

Monoclonal Antibody

UnitProt No.

P01040

NCBI Accession No.

NP_005204

Alternative Names

Cystatin-A, STF1, STFA

PRODUCT SPECIFICATION

Antibody Host

Mouse

Reacts With

Human

Concentration

1mg/ml (determined by BCA assay)

Formulation

Liquid in. Phosphate-Buffered Saline (pH 7.4) with 0.02% Sodium Azide, 10% glycerol

Immunogen

Recombinant human CSTA (1-98aa) purified from E. coli

Isotype

IgG1 kappa

Purification Note

By protein-A affinity chromatography

Application

ELISA, WB, ICC/IF

Usage

The antibody has been tested by ELISA, Western blot analysis, Flow cytometry and ICC/IF to assure specificity and reactivity. Since application varies, however, each investigation should be titrated by the reagent to obtain optimal results.

Human Cystatin A antibody

Catalog Number: ATGA0432

Storage

Can be stored at +2C to +8C for 1 week. For long term storage, aliquot and store at -20C to -80C. Avoid repeated freezing and thawing cycles.

BACKGROUND

Description

CSTA, also known as Stefin A, is thiol protease inhibitors that form complexes with papain and the cathepsins B, H and L. The protein is one of the precursor proteins of the cornified cell envelope in keratinocytes and plays a role in epidermal development and maintenance. CSTA is thought to be a tumor suppressor, since an inverse correlation seems to exist between the level of CSTA and tumor progression, in several malignancies.

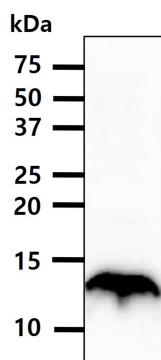
General References

Takai T., et al. (2009) J Immuno. 183(12): 7958-65.

Sinha AA., et al. (2008) Anticancer Res. 28(4B): 2271-7.

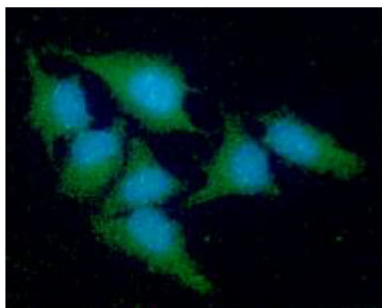
DATA

Western blot analysis (WB)



The A431 cell lysate (40ug) was resolved by SDS-PAGE, transferred to PVDF membrane and probed with anti-human CSTA antibody (1:1000). Proteins were visualized using a goat anti-mouse secondary antibody conjugated to HRP and an ECL detection system.

Immunocytochemistry/Immunofluorescence (ICC/IF)



ICC/IF analysis of CSTA in HeLa cells line, stained with DAPI (Blue) for nucleus staining and monoclonal anti-human CSTA antibody (1:100) with goat anti-mouse IgG-Alexa fluor 488 conjugate (Green).