

# Human S100A11 antibody

Catalog Number: ATGA0434

## PRODUCT INFORMATION

---

**Catalog number**

ATGA0434

**Clone No.**

AT20D11

**Product type**

Monoclonal Antibody

**UnitProt No.**

P31949

**NCBI Accession No.**

NP\_005611

**Alternative Names**

S100 calcium binding protein A11, MLN70, S100C

## PRODUCT SPECIFICATION

---

**Antibody Host**

Mouse

**Reacts With**

Human

**Concentration**

1mg/ml (determined by BCA assay)

**Formulation**

Liquid in. Phosphate-Buffered Saline (pH 7.4) with 0.02% Sodium Azide, 10% glycerol

**Immunogen**

Recombinant human S100A11 (1-105aa) purified from E. coli

**Isotype**

IgG1 kappa

**Purification Note**

By protein-A affinity chromatography

**Application**

ELISA, WB, ICC/IF, FACS

**Usage**

The antibody has been tested by ELISA, Western blot analysis, Flow cytometry and ICC/IF to assure specificity and reactivity. Since application varies, however, each investigation should be titrated by the reagent to obtain optimal results.

# Human S100A11 antibody

Catalog Number: ATGA0434

## Storage

Can be stored at +2C to +8C for 1 week. For long term storage, aliquot and store at -20C to -80C. Avoid repeated freezing and thawing cycles.

## BACKGROUND

### Description

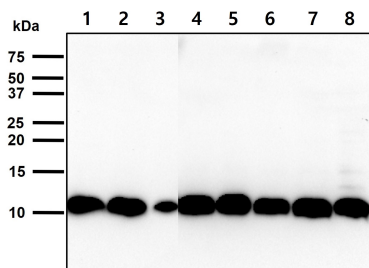
S100A11 is a member of the S100 family of proteins containing 2 EF-hand calcium-binding motifs. S100 proteins are localized in the cytoplasm and/or nucleus of a wide range of cells, and involved in the regulation of a number of cellular processes such as cell cycle progression and differentiation. This protein may function in motility, invasion, and tubulin polymerization.

### General References

Sakaguchi M., et al. (2003) J Cell Biol. 163: 825-35.  
Settmacher U., et al. (2005) Int. J. Oncol. 28: 195-200.

## DATA

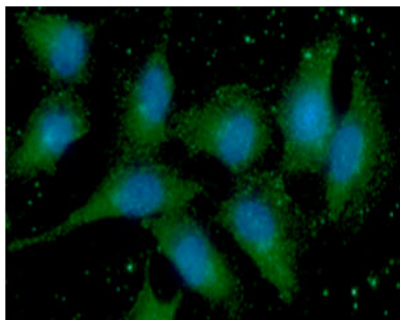
### Western blot analysis (WB)



The cell lysates (40ug) were resolved by SDS-PAGE, transferred to PVDF membrane and probed with anti-human S100A11 antibody (1:1000). Proteins were visualized using a goat anti-mouse secondary antibody conjugated to HRP and an ECL detection system.

Lane 1. : HeLa cell lysate  
Lane 2. : MCF7 cell lysate  
Lane 3. : PC3 cell lysate  
Lane 4. : THP1 cell lysate  
Lane 5. : U87MG cell lysate  
Lane 6. : A427 cell lysate  
Lane 7. : SK-OV-3 cell lysate  
Lane 8. : A549 cell lysate

### Immunocytochemistry/Immunofluorescence (ICC/IF)



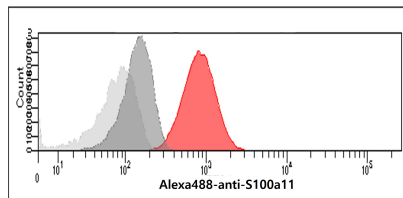
ICC/IF analysis of S100A11 in A549 cells line, stained with DAPI (Blue) for nucleus staining and monoclonal anti-human S100A11 antibody (1:100) with goat anti-mouse IgG-Alexa fluor 488 conjugate (Green).

### Flow cytometry (FACS)

## Human S100A11 antibody

Catalog Number: ATGA0434

Flow cytometry analysis of S100a11 in HeLa cells. The cell was stained with ATGA0434 at 2-5ug for  $1 \times 10^6$  cells (red). A Goat anti mouse IgG (Alexa fluor 488) was used as the secondary antibody. Mouse monoclonal IgG was used as the isotype control (dark gray), cells without incubation with primary and secondary antibody was used as the negative control (light gray).



Flow cytometry analysis of S100a11 in A549 cells. The cell was stained with ATGA0434 at 2-5ug for  $1 \times 10^6$  cells (red). A Goat anti mouse IgG (Alexa fluor 488) was used as the secondary antibody. Mouse monoclonal IgG was used as the isotype control (dark gray), cells without incubation with primary and secondary antibody was used as the negative control (light gray).

