

Human Calbindin 2/CALB2 antibody

Catalog Number: ATGA0435

PRODUCT INFORMATION

Catalog number

ATGA0435

Clone No.

AT5C5

Product type

Monoclonal Antibody

UnitProt No.

P22676

NCBI Accession No.

AAH15484

Alternative Names

CR, Calretinin, CALB2, CAL2, CAB29, 29 kDa calbindin

PRODUCT SPECIFICATION

Antibody Host

Mouse

Reacts With

Human

Concentration

1mg/ml (determined by BCA assay)

Formulation

Liquid in. Phosphate-Buffered Saline (pH 7.4) with 0.02% Sodium Azide, 10% glycerol

Immunogen

Recombinant human CALB2 (1-271aa) purified from E. coli

Isotype

IgG1 kappa

Purification Note

By protein-A affinity chromatography

Application

ELISA, WB, ICC/IF

Usage

The antibody has been tested by ELISA, Western blot and ICC/IF analysis to assure specificity and reactivity. Since application varies, however, each investigation should be titrated by the reagent to obtain optimal results.

Storage

Human Calbindin 2/CALB2 antibody

Catalog Number: ATGA0435

Can be stored at +2C to +8C for 1 week. For long term storage, aliquot and store at -20C to -80C. Avoid repeated freezing and thawing cycles.

BACKGROUND

Description

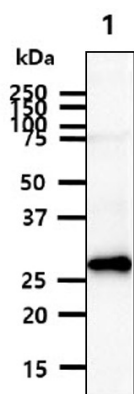
CALB2 is an intracellular calcium-binding protein belonging to the troponin C superfamily. Members of this protein family have six EF-hand domains which bind calcium. This protein plays a role in diverse cellular functions, including message targeting and intracellular calcium buffering. It also functions as a modulator of neuronal excitability, and is a diagnostic marker for some human diseases, including Hirschsprung disease and some cancers.

General References

Rogers JH., et al. (1987) J Cell Biol. 105(3): 1343-1353.
Dreher B., et al. (1996) J. Comp. Neurol. 376(2): 223-40.

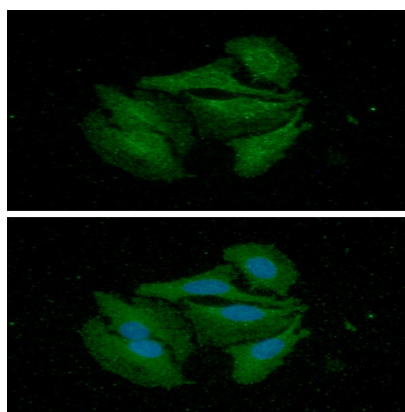
DATA

Western blot analysis (WB)



The tissue lysate (40ug) was resolved by SDS-PAGE, transferred to PVDF membrane and probed with anti-human CALB2 antibody (1:500). Proteins were visualized using a goat anti-mouse secondary antibody conjugated to HRP and an ECL detection system.
Lane 1.: Mouse brain tissue lysate

Immunocytochemistry/Immunofluorescence (ICC/IF)



ICC/IF analysis of CALB2 in HeLa cells. The cell was stained with ATGA0333 (1:100). The secondary antibody (green) was used Alexa Fluor 488. DAPI was stained the cell nucleus (blue).