

Human EphA2 antibody

Catalog Number: ATGA0441

PRODUCT INFORMATION

Catalog number

ATGA0441

Clone No.

AT66G9

Product type

Monoclonal Antibody

UnitProt No.

P29317

NCBI Accession No.

NP_004422

Alternative Names

EPH receptor A2, Ephrin type-A receptor 2, EPHA2, Epithelial cell kinase, Tyrosine-protein kinase receptor ECK, ARCC2, CTPA, CTPP1, CTRCT6

PRODUCT SPECIFICATION

Antibody Host

Mouse

Reacts With

Human

Concentration

1mg/ml (determined by BCA assay)

Formulation

Liquid in. Phosphate-Buffered Saline (pH 7.4) with 0.02% Sodium Azide, 10% glycerol

Immunogen

Recombinant human EPHA2 (27-537aa) purified from E. coli

Isotype

IgG2b kappa

Purification Note

By protein-A affinity chromatography

Application

ELISA, WB, ICC/IF

Usage

The antibody has been tested by ELISA, Western blot analysis, and ICC/IF to assure specificity and reactivity. Since application varies, however, each investigation should be titrated by the reagent to obtain optimal results.

Human EphA2 antibody

Catalog Number: ATGA0441

Storage

Can be stored at +2C to +8C for 1 week. For long term storage, aliquot and store at -20C to -80C. Avoid repeated freezing and thawing cycles.

BACKGROUND

Description

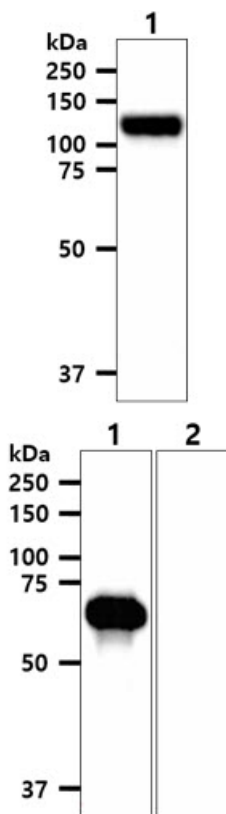
EPHA2, also known as ephrin type-A receptor 2, is a member of the ephrin receptor subfamily of the protein-tyrosine kinase family. It is implicated as positional labels that may guide the development of neural topographic maps. It has also been found implicated in embryonic patterning, neuronal targeting, vascular development and adult neovascularization.

General References

Flanagan JG., et al. (1998) *Annu Rev Neurosci.* 21: 309-345.
Cheng N., et al. (2002) *Cytokine Growth Factor Rev.* 13: 75-85.

DATA

Western blot analysis (WB)



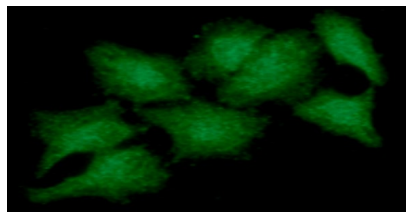
The cell lysate (40ug) were resolved by SDS-PAGE, transferred to PVDF membrane and probed with anti-human EPHA2 antibody (1:1000). Proteins were visualized using a goat anti-mouse secondary antibody conjugated to HRP and an ECL detection system.
Lane 1 : PC3 cell lysate

Recombinant proteins (20ng) were resolved by SDS-PAGE, transferred to PVDF membrane and probed with anti-human EPHA2 antibody (1:1000). Proteins were visualized using a goat anti-mouse secondary antibody conjugated to HRP and an ECL detection system.
Lane 1 : Recombinant human EPHA2 extracellular domain
Lane 2 : Recombinant human EPHA2 cytoplasmic domain

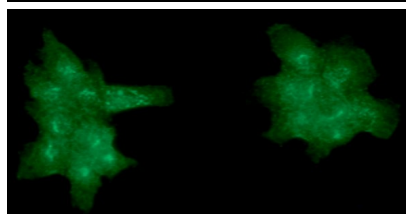
Immunocytochemistry/Immunofluorescence (ICC/IF)

Human EphA2 antibody

Catalog Number: ATGA0441



ICC/IF analysis of EPHA2 in HeLa cell line, stained monoclonal anti-human EPHA2 antibody (1:100) with goat anti-mouse IgG-Alexa fluor 488 conjugate (Green).



ICC/IF analysis of EPHA2 in A431 cell line, stained monoclonal anti-human EPHA2 antibody (1:100) with goat anti-mouse IgG-Alexa fluor 488 conjugate (Green).