

Human NCS1 antibody

Catalog Number: ATGA0442

PRODUCT INFORMATION

Catalog number

ATGA0442

Clone No.

AT11B8

Product type

Monoclonal Antibody

UnitProt No.

P62166

NCBI Accession No.

NP_055101

Alternative Names

Neuronal calcium sensor 1, Frequenin homolog, FLuP, FREQ, Neuronal calcium sensor 1 Flup, Freq, frequenin (Drosophila) homolog, Frequenin-like protein, NCS1, Neuronal Calcium Sensor 1.

PRODUCT SPECIFICATION

Antibody Host

Mouse

Reacts With

Human

Concentration

1mg/ml (determined by BCA assay)

Formulation

Liquid in. Phosphate-Buffered Saline (pH 7.4) with 0.02% Sodium Azide, 10% glycerol

Immunogen

Recombinant human NCS1 (1-190aa) purified from E. coli

Isotype

IgG1 kappa

Purification Note

By protein-A affinity chromatography

Application

ELISA, WB, FACS

Usage

The antibody has been tested by ELISA, Western blot analysis and Flow cytometry to assure specificity and reactivity. Since application varies, however, each investigation should be titrated by the reagent to obtain optimal results.

Human NCS1 antibody

Catalog Number: ATGA0442

Storage

Can be stored at +2C to +8C for 1 week. For long term storage, aliquot and store at -20C to -80C. Avoid repeated freezing and thawing cycles.

BACKGROUND

Description

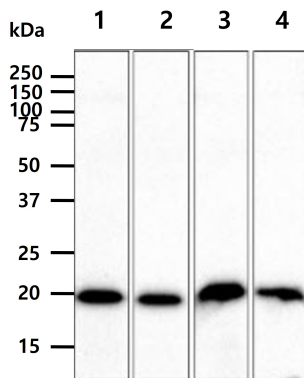
NCS1 is a member of the neuronal calcium sensor gene family, which encode calcium-binding proteins expressed predominantly in neurons. This protein regulates G protein-coupled receptor phosphorylation in a calcium-dependent manner and can substitute for calmodulin. It is associated with secretory granules and modulates synaptic transmission and synaptic plasticity. Multiple transcript variants encoding different isoforms have been found for this gene.

General References

Nakamura TY., et al (2001) Proc. Natl. Acad. Sci. u.S.A. 98: 12808-12813.
 Bahi N., et al (2003) Hum. Mol. Genet. 12: 1415-1425.

DATA

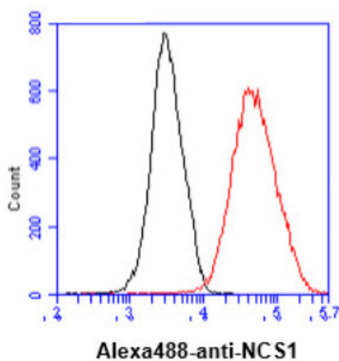
Western blot analysis (WB)



The cell lysates (40ug) were resolved by SDS-PAGE, transferred to PVDF membrane and probed with anti-human NCS1 antibody (1:1000). Proteins were visualized using a goat anti-mouse secondary antibody conjugated to HRP and an ECL detection system.

Lane 1.: 293T cell lysate
 Lane 2.: K562 cell lysate
 Lane 3.: LnCap cell lysate
 Lane 4.: HeLa cell lysate

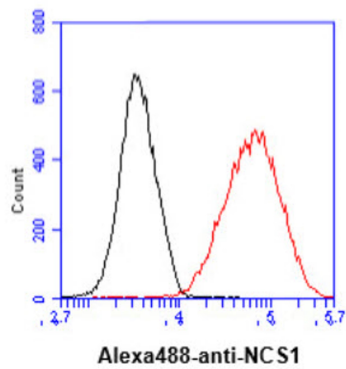
Flow cytometry (FACS)



Flow cytometry analysis of NCS1 in A549 cell line, staining at 2-5ug for 1×10^6 cells (red line). The secondary antibody used goat anti-mouse IgG Alexa fluor 488 conjugate. Isotype control antibody was mouse IgG (black line).

Human NCS1 antibody

Catalog Number: ATGA0442



Flow cytometry analysis of NCS1 in HeLa cell line, staining at 2-5ug for 1×10^6 cells (red line). The secondary antibody used goat anti-mouse IgG Alexa fluor 488 conjugate. Isotype control antibody was mouse IgG (black line).