

Human AST1/GOT1 antibody

Catalog Number: ATGA0445

PRODUCT INFORMATION

Catalog number

ATGA0445

Clone No.

AT3G11

Product type

Monoclonal Antibody

UnitProt No.

P17174

NCBI Accession No.

NP_002070

Alternative Names

Glutamic-oxaloacetic transaminase 1, Aspartate aminotransferase 1, Aspartate transaminase 1, AST1, SGOT, AST, cAspAT, Cysteine aminotransferase cytoplasmic, Cysteine transaminase, Cytoplasmic, cCAT, Transaminase A

PRODUCT SPECIFICATION

Antibody Host

Mouse

Reacts With

Human

Concentration

1mg/ml (determined by BCA assay)

Formulation

Liquid in. Phosphate-Buffered Saline (pH 7.4) with 0.02% Sodium Azide, 10% glycerol

Immunogen

Recombinant human GOT1 (1-413aa) purified from E. coli

Isotype

IgG2a kappa

Purification Note

By protein-A affinity chromatography

Application

ELISA, WB, ICC/IF, FACS

Usage

The antibody has been tested by ELISA, Western blot analysis, Flow cytometry and ICC/IF to assure specificity and reactivity. Since application varies, however, each investigation should be titrated by the reagent to obtain optimal results.

Human AST1/GOT1 antibody

Catalog Number: ATGA0445

Storage

Can be stored at +2C to +8C for 1 week. For long term storage, aliquot and store at -20C to -80C. Avoid repeated freezing and thawing cycles.

BACKGROUND

Description

Glutamic-oxaloacetic transaminase (GOT) is a pyridoxal phosphate-dependent enzyme which exists in cytoplasmic and mitochondrial forms, GOT1 and GOT2, respectively. GOT plays a role in amino acid metabolism and the urea and tricarboxylic acid cycles. The two enzymes are homodimeric and show close homology.

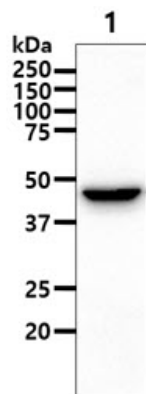
General References

Bousquet-Lemerrier B., et al. (1990) *Biochemistry* 29(22): 5293-9.

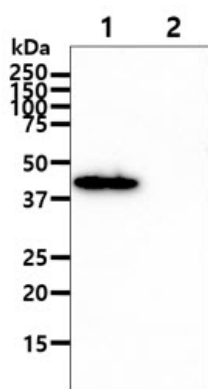
Totan A., et al. (2006) *Clin Chem Lab Med.* 44(5): 612-5.

DATA

Western blot analysis (WB)



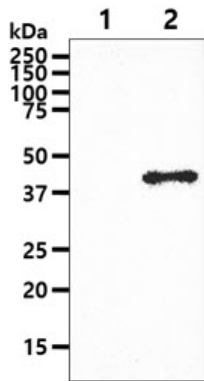
The cell lysate (40ug) were resolved by SDS-PAGE, transferred to PVDF membrane and probed with anti-human GOT1 antibody (1:1000). Proteins were visualized using a goat anti-mouse secondary antibody conjugated to HRP and an ECL detection system.
Lane 1 : A427 cell lysate



The recombinant proteins (100ng) were resolved by SDS-PAGE, transferred to PVDF membrane and probed with anti-human GOT1 antibody (1:1000). Proteins were visualized using a goat anti-mouse secondary antibody conjugated to HRP and an ECL detection system.
Lane 1 : Recombinant human GOT1
Lane 2 : Recombinant human GOT2

Human AST1/GOT1 antibody

Catalog Number: ATGA0445

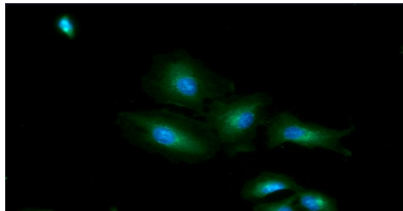


The cell lysates (10ug) were resolved by SDS-PAGE, transferred to PVDF membrane and probed with anti-human GOT1 antibody (1:1000). Proteins were visualized using a goat anti-mouse secondary antibody conjugated to HRP and an ECL detection system.

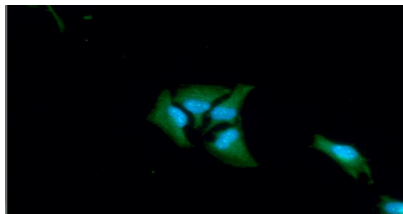
Lane 1 : 293T cell lysate

Lane 2 : GOT1 Transfected 293T cell lysate

Immunocytochemistry/Immunofluorescence (ICC/IF)

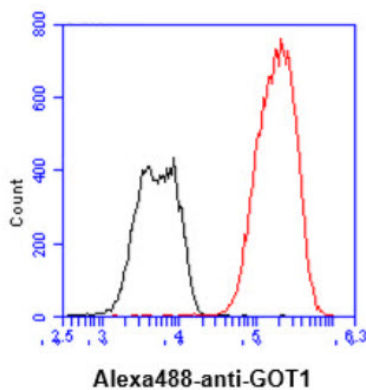


ICC/IF analysis of GOT1 in A549 cells line, stained with DAPI (Blue) for nucleus staining and monoclonal anti-human GOT1 antibody (1:100) with goat anti-mouse IgG-Alexa fluor 488 conjugate (Green).



ICC/IF analysis of GOT1 in HeLa cells line, stained with DAPI (Blue) for nucleus staining and monoclonal anti-human GOT1 antibody (1:100) with goat anti-mouse IgG-Alexa fluor 488 conjugate (Green).

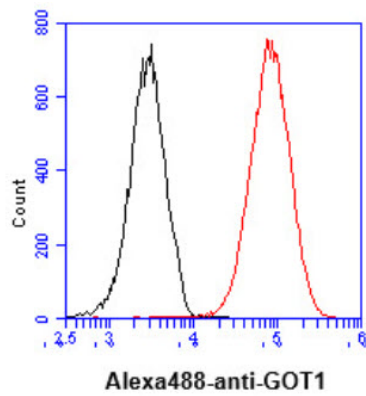
Flow cytometry (FACS)



Flow cytometry analysis of GOT1 in Hep3B cell line, staining at 2-5ug for 1x10⁶ cells (red line). The secondary antibody used goat anti-mouse IgG Alexa fluor 488 conjugate. Isotype control antibody was mouse IgG (black line).

Human AST1/GOT1 antibody

Catalog Number: ATGA0445



Flow cytometry analysis of GOT1 in HeLa cell line, staining at 2-5ug for 1x10⁶ cells (red line). The secondary antibody used goat anti-mouse IgG Alexa fluor 488 conjugate. Isotype control antibody was mouse IgG (black line).