

Human Aldehyde dehydrogenase 2/ALDH2 antibody

Catalog Number: ATGA0450

PRODUCT INFORMATION

Catalog number

ATGA0450

Clone No.

AT2C10

Product type

Monoclonal Antibody

UnitProt No.

P05091

NCBI Accession No.

NP_000681

Alternative Names

Aldehyde dehydrogenase 2 family member, Aldehyde dehydrogenase mitochondrial, ALDH class 2, ALDH-E2, ALDHI, ALDM

PRODUCT SPECIFICATION

Antibody Host

Mouse

Reacts With

Human

Concentration

1mg/ml (determined by BCA assay)

Formulation

Liquid in. Phosphate-Buffered Saline (pH 7.4) with 0.02% Sodium Azide, 10% glycerol

Immunogen

Recombinant human ALDH2 (18-517aa) purified from E. coli

Isotype

IgG2a kappa

Purification Note

By protein-A affinity chromatography

Application

ELISA, WB, ICC/IF

Usage

The antibody has been tested by ELISA, Western blot analysis and ICC/IF to assure specificity and reactivity. Since application varies, however, each investigation should be titrated by the reagent to obtain optimal results.

Human Aldehyde dehydrogenase 2/ALDH2 antibody

Catalog Number: ATGA0450

Storage

Can be stored at +2C to +8C for 1 week. For long term storage, aliquot and store at -20C to -80C. Avoid repeated freezing and thawing cycles.

BACKGROUND

Description

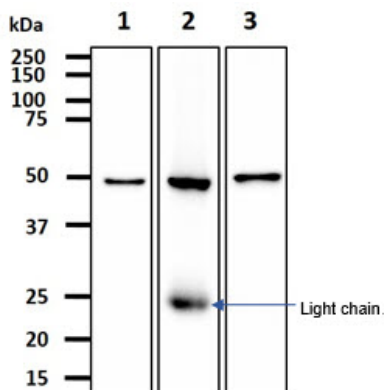
ALDH2 (Aldehyde dehydrogenase 2 family) belongs to the aldehyde dehydrogenase family which catalyze the chemical transformation from acetaldehyde to acetic acid and is the second enzyme of the major oxidative pathway of alcohol metabolism. There are two major liver isoforms of this enzyme, cytosolic and mitochondrial, and they can be also distinguished by their electrophoretic mobilities, kinetic properties, and subcellular localizations.

General References

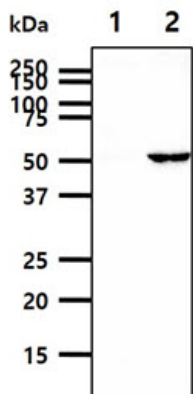
Crabb DW., et al. (1989) J Clin Invest. 83(1): 314-6.
Feng Liu., et al. (2002) Plant Physiol. 130(4): 1657-1674.

DATA

Western blot analysis (WB)



The cell and tissue lysates (40ug) were resolved by SDS-PAGE, transferred to PVDF membrane and probed with anti-human ALDH2 antibody (1:1000). Proteins were visualized using a goat anti-mouse secondary antibody conjugated to HRP and an ECL detection system.
Lane 1. : HepG2 cell lysate
Lane 2. : Mouse liver tissue lysate
Lane 3. : Mouse lung tissue lysate

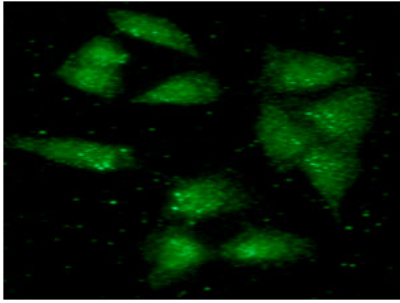


The cell lysates (40ug) were resolved by SDS-PAGE, transferred to PVDF membrane and probed with anti-human ALDH2 antibody (1:500). Proteins were visualized using a goat anti-mouse secondary antibody conjugated to HRP and an ECL detection system.
Lane 1. : 293T cell lysate
Lane 2. : ALDH2 transfected 293T cell lysate

Immunocytochemistry/Immunofluorescence (ICC/IF)

Human Aldehyde dehydrogenase 2/ALDH2 antibody

Catalog Number: ATGA0450



ICC/IF analysis of ALDH2 in A549 cells line, stained with monoclonal anti-human ALDH2 antibody (1:100) with goat anti-mouse IgG-Alexa fluor 488 conjugate (Green).