

# Human GMF-beta/GMFB antibody

Catalog Number: ATGA0452

## PRODUCT INFORMATION

---

**Catalog number**

ATGA0452

**Clone No.**

AT44D8

**Product type**

Monoclonal Antibody

**UnitProt No.**

P60983

**NCBI Accession No.**

NP\_004115

**Alternative Names**

Glia maturation factor beta, GMF, GMF beta, Glia maturation factor beta

## PRODUCT SPECIFICATION

---

**Antibody Host**

Mouse

**Reacts With**

Human

**Concentration**

1mg/ml (determined by BCA assay)

**Formulation**

Liquid in. Phosphate-Buffered Saline (pH 7.4) with 0.02% Sodium Azide, 10% glycerol

**Immunogen**

Recombinant human GMFB (1-142aa) purified from E. coli

**Isotype**

IgG2a kappa

**Purification Note**

By protein-A affinity chromatography

**Application**

ELISA, WB, ICC/IF

**Usage**

The antibody has been tested by ELISA, Western blot and ICC/IF to assure specificity and reactivity. Since application varies, however, each investigation should be titrated by the reagent to obtain optimal results.

**Storage**

# Human GMF-beta/GMFB antibody

Catalog Number: ATGA0452

Can be stored at +2C to +8C for 1 week. For long term storage, aliquot and store at -20C to -80C. Avoid repeated freezing and thawing cycles.

## BACKGROUND

### Description

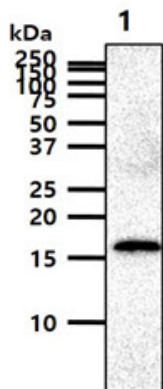
GMFB, also known as GMF, belongs to the GMF subfamily of the larger actin-binding protein ADF family. This protein, which is phosphorylated following phorbol ester stimulation, is important for the nervous system. It causes brain cell differentiation, stimulates neural regeneration and inhibits tumor cell proliferation. Overexpression of GMFB in astrocytes has been shown to enhance brain-derived neurotrophic factor (BDNF) production. GMFB expression is increased by exercise, and the protein is crucial for exercise-induction of BDNF.

### General References

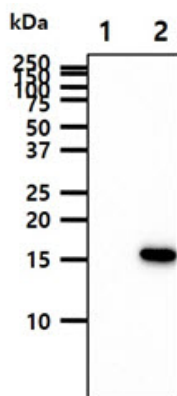
Li YL., et al. (2010) Eur J Cancer. 46(11): 2104-18.  
Wada T., et al. (2009) Int J Oncol. 35(5): 973-6.

## DATA

### Western blot analysis (WB)



The cell lysate (40ug) were resolved by SDS-PAGE, transferred to PVDF membrane and probed with anti-human GMFB antibody (1:1000). Proteins were visualized using a goat anti-mouse secondary antibody conjugated to HRP and an ECL detection system.  
Lane 1.: PC3 cell lysate

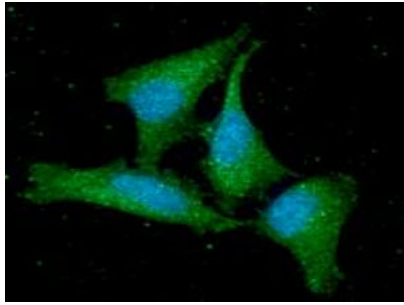


The cell lysates (10ug) were resolved by SDS-PAGE, transferred to PVDF membrane and probed with anti-human GMFB antibody (1:1000). Proteins were visualized using a goat anti-mouse secondary antibody conjugated to HRP and an ECL detection system.  
Lane 1.: 293T cell lysate  
Lane 2.: GMFB transfected 293T cell lysate

### Immunocytochemistry/Immunofluorescence (ICC/IF)

## Human GMF-beta/GMFB antibody

Catalog Number: ATGA0452



ICC/IF analysis of GMFB in HeLa cells line, stained with DAPI (Blue) for nucleus staining and monoclonal anti-human GMFB antibody (1:100) with goat anti-mouse IgG-Alexa fluor 488 conjugate (Green).