

Human RKIP/PEBP1 antibody

Catalog Number: ATGA0456

PRODUCT INFORMATION

Catalog number

ATGA0456

Clone No.

AT4B11

Product type

Monoclonal Antibody

UnitProt No.

P30086

NCBI Accession No.

NP_002558

Alternative Names

Phosphatidylethanolamine binding protein 1, PBP, Prostatic binding protein, RKIP, HCNP, HCNPpp, PEBP, Raf kinase inhibitory protein, Hippocampal cholinergic neurostimulating peptide

PRODUCT SPECIFICATION

Antibody Host

Mouse

Reacts With

Human

Concentration

1mg/ml (determined by BCA assay)

Formulation

Liquid in. Phosphate-Buffered Saline (pH 7.4) with 0.02% Sodium Azide, 10% glycerol

Immunogen

Recombinant human PEBP1 (1-187aa) purified from E. coli

Isotype

IgG2b kappa

Purification Note

By protein-A affinity chromatography

Application

ELISA, WB, ICC/IF

Usage

The antibody has been tested by ELISA, Western blot and ICC/IF analysis to assure specificity and reactivity. Since application varies, however, each investigation should be titrated by the reagent to obtain optimal results.

Human RKIP/PEBP1 antibody

Catalog Number: ATGA0456

Storage

Can be stored at +2C to +8C for 1 week. For long term storage, aliquot and store at -20C to -80C. Avoid repeated freezing and thawing cycles.

BACKGROUND

Description

Phosphatidylethanolamine binding protein 1 (PEBP1), also known as Raf kinase inhibitor protein (RKIP), is a member of the phosphatidylethanolamine-binding protein family and a serine protease inhibitor which inhibits thrombin, neuropsin. PEBP1 plays a pivotal modulatory role in several protein kinase signaling cascades. Protein kinase C (PKC) phosphorylates PEBP1, resulting in release of Raf-1 and activation of MEK and ERK. Expressed in many tissues, PEBP1 is implicated in the regulation of such physiological processes as membrane biosynthesis, spermatogenesis, neural development, and metastasis suppression.

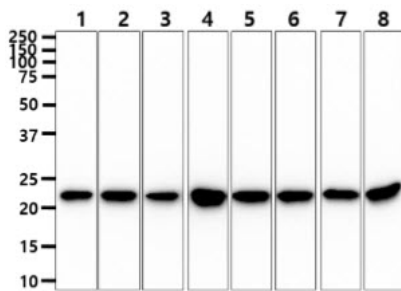
General References

Keller ET., et al. (2004) *Biochem Pharmacol.* 68(6): 1049-53.

Park S., et al. (2005) *Oncogene.* 24(21): 3535-40.

DATA

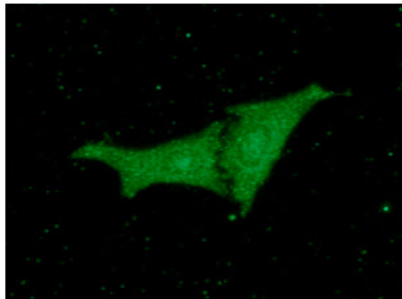
Western blot analysis (WB)



The cell lysates (40ug) were resolved by SDS-PAGE, transferred to PVDF membrane and probed with anti-human PEBP1 antibody (1:1000). Proteins were visualized using a goat anti-mouse secondary antibody conjugated to HRP and an ECL detection system.

Lane 1 : HeLa cell lysate
Lane 2 : SKOV3 cell lysate
Lane 3 : A549 cell lysate
Lane 4 : HepG2 cell lysate
Lane 5 : MCF7 cell lysate
Lane 6 : K562 cell lysate
Lane 7 : LnCap cell lysate
Lane 8 : Ramos cell lysate

Immunocytochemistry/Immunofluorescence (ICC/IF)



ICC/IF analysis of PEBP1 in HeLa cells line, monoclonal anti-human PEBP1 antibody (1:100) stained with goat anti-mouse IgG-Alexa fluor 488 conjugate (Green).