

Human Serpin E1/PAI-1 antibody

Catalog Number: ATGA0458

PRODUCT INFORMATION

Catalog number

ATGA0458

Clone No.

AT1C5

Product type

Monoclonal Antibody

UnitProt No.

P05121

NCBI Accession No.

NP_000593

Alternative Names

Plasminogen activator inhibitor-1, PLANH1, SERPINE1, PAI1, PLANH1, Plasminogen activator inhibitor-1, Plasminogen activator inhibitor-1

PRODUCT SPECIFICATION

Antibody Host

Mouse

Reacts With

Human

Concentration

1mg/ml (determined by BCA assay)

Formulation

Liquid in. Phosphate-Buffered Saline (pH 7.4) with 0.02% Sodium Azide, 10% glycerol

Immunogen

Recombinant human PAI1 (24-402aa) purified from E. coli.

Isotype

IgG1 kappa

Purification Note

By protein-A affinity chromatography

Application

ELISA, WB, ICC/IF

Usage

The antibody has been tested by ELISA, Western blot analysis and ICC/IF to assure specificity and reactivity. Since application varies, however, each investigation should be titrated by the reagent to obtain optimal results.

Human Serpin E1/PAI-1 antibody

Catalog Number: ATGA0458

Storage

Can be stored at +2C to +8C for 1 week. For long term storage, aliquot and store at -20C to -80C. Avoid repeated freezing and thawing cycles.

BACKGROUND

Description

Plasminogen activator inhibitor-1 (PAI-1), a member of the serine protease inhibitor (serpin) super family. PAI-1 is the principal inhibitor of tissue plasminogen activator and urokinase, the activators of plasminogen and hence fibrinolysis. PAI-1 is mainly produced by the endothelium but is also secreted by other tissue types, such as adipose tissue.

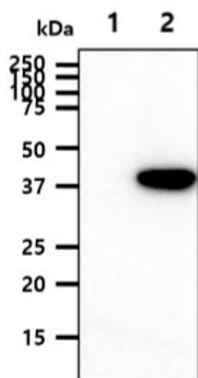
General References

Gorlatova NV., et al.(2007) J Biol Chem. 282(12): 9288-9296.

Renckens R., et al. (2006) J Immunol. 177(11): 8171-8176.

DATA

Western blot analysis (WB)

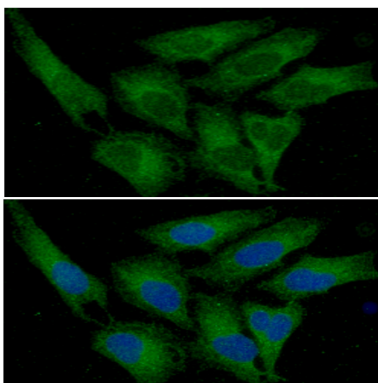


The cell lysates (40ug) were resolved by SDS-PAGE, transferred to PVDF membrane and probed with anti-human PAI1 antibody (1:1000). Proteins were visualized using a goat anti-mouse secondary antibody conjugated to HRP and an ECL detection system.

Lane 1.: 293T cell lysate

Lane 2.: PAI1 transfected 293T cell lysate

Immunocytochemistry/Immunofluorescence (ICC/IF)



ICC/IF analysis of PAI1 in HeLa cells. The cell was stained with ATGA0458 (1:100). The secondary antibody (green) was used Alexa Fluor 488. DAPI was stained the cell nucleus (blue).