

# Human Aminopeptidase P1/XPNPEP1 antibody

Catalog Number: ATGA0462

## PRODUCT INFORMATION

---

**Catalog number**

ATGA0462

**Clone No.**

AT9C7

**Product type**

Monoclonal Antibody

**UnitProt No.**

Q9NQW7

**NCBI Accession No.**

NP\_065116

**Alternative Names**

Xaa-Pro aminopeptidase 1 isoform 1, APP1, SAMP, XPNPEP, XPNPEPL, XPNPEPL1

## PRODUCT SPECIFICATION

---

**Antibody Host**

Mouse

**Reacts With**

Human

**Concentration**

1mg/ml (determined by BCA assay)

**Formulation**

Liquid in. Phosphate-Buffered Saline (pH 7.4) with 0.02% Sodium Azide, 10% glycerol

**Immunogen**

Recombinant human XPNPEP1 (1-623aa) purified from E. coli

**Isotype**

IgG2b kappa

**Purification Note**

By protein-A affinity chromatography

**Application**

ELISA, WB, ICC/IF

**Usage**

The antibody has been tested by ELISA, Western blot and ICC/IF analysis to assure specificity and reactivity. Since application varies, however, each investigation should be titrated by the reagent to obtain optimal results.

**Storage**

# Human Aminopeptidase P1/XPNPEP1 antibody

Catalog Number: ATGA0462

Can be stored at +2C to +8C for 1 week. For long term storage, aliquot and store at -20C to -80C. Avoid repeated freezing and thawing cycles.

## BACKGROUND

### Description

XPNPEP1 also known as Xaa-Pro aminopeptidase 1 isoform 1, is encodes the cytosolic form of a metalloaminopeptidase that catalyzes the cleavage of the N-terminal amino acid adjacent to a proline residue. This product may play a role in degradation and maturation of tachykinins, neuropeptides, and peptide hormones.

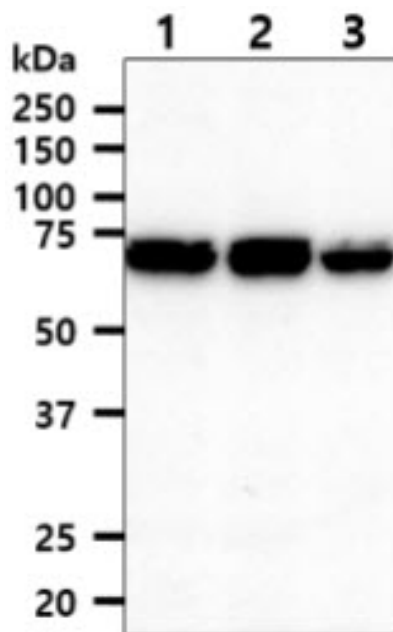
### General References

Cottrell G.S., et al. (2000) *Biochemistry*. 39: 15121-15128.

Li X., et al. (2008) *J. Biol. Chem.* 283: 22858-22866.

## DATA

### Western blot analysis (WB)



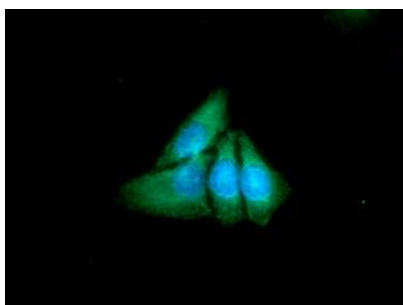
The cell lysates (40ug) were resolved by SDS-PAGE, transferred to PVDF membrane and probed with anti-human XPNPEP1 antibody (1:1000). Proteins were visualized using a goat anti-mouse secondary antibody conjugated to HRP and an ECL detection system.

Lane 1.: Jurkat cell lysate

Lane 2.: HeLa cell lysate

Lane 3.: MCF7 cell lysate

### Immunocytochemistry/Immunofluorescence (ICC/IF)



ICC/IF analysis of XPNPEP1 in HeLa cells. The cell was stained with ATGA0462 (1:100). The secondary antibody (green) was used Alexa Fluor 488. DAPI was stained the cell nucleus (blue).