

# Human Cyclophilin E/PPIE antibody

Catalog Number: ATGA0465

## PRODUCT INFORMATION

---

**Catalog number**

ATGA0465

**Clone No.**

AT17E8

**Product type**

Monoclonal Antibody

**UnitProt No.**

Q9UNP9

**NCBI Accession No.**

NP\_006103

**Alternative Names**

Peptidylprolyl isomerase E isoform 1, CYP-33, Cyclophilin E, PPlase E, Rotamase E, peptidylprolyl isomerase E (cyclophilin E), PPIE, Peptidylprolyl isomerase E isoform 1 Cyclophilin 33, CYP33, EC 5.2.1.8 Peptidyl prolyl cis trans isomerase E

## PRODUCT SPECIFICATION

---

**Antibody Host**

Mouse

**Reacts With**

Human

**Concentration**

1mg/ml (determined by BCA assay)

**Formulation**

Liquid in. Phosphate-Buffered Saline (pH 7.4) with 0.02% Sodium Azide, 10% glycerol

**Immunogen**

Recombinant human PPIE (1-301aa) purified from E. coli

**Isotype**

IgG1 kappa

**Purification Note**

By protein-A affinity chromatography

**Application**

ELISA, WB

**Usage**

The antibody has been tested by ELISA and Western blot analysis to assure specificity and reactivity. Since application varies, however, each investigation should be titrated by the reagent to obtain optimal results.

# Human Cyclophilin E/PPIE antibody

Catalog Number: ATGA0465

## Storage

Can be stored at +2C to +8C for 1 week. For long term storage, aliquot and store at -20C to -80C. Avoid repeated freezing and thawing cycles.

## BACKGROUND

### Description

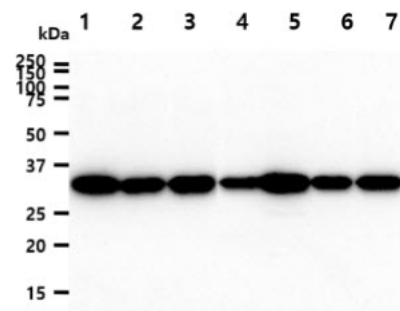
Cyclophilins possess the activity of peptidyl-prolyl cis-trans isomerase (PPIase) and are involved in cellular protein folding and protein interactions. PPIE contains two RNA binding domains at the N-terminal region and a PPIase domain at the C-terminal region. It was not known what cellular and physiological roles of PPIE.

### General References

Wang Y., et al. (2008) Genomics. FEBS Lett 582(5): 835-9.  
Mi H S., et al. (1996) FEBS Lett. 398: 201-5.

## DATA

### Western blot analysis (WB)



The cell lysates (40ug) were resolved by SDS-PAGE, transferred to PVDF membrane and probed with anti-human PPIE antibody (1:1000). Proteins were visualized using a goat anti-mouse secondary antibody conjugated to HRP and an ECL detection system.

Lane 1.: HeLa cell lysate  
Lane 2.: Jurkat cell lysate  
Lane 3.: 293T cell lysate  
Lane 4.: A549 cell lysate  
Lane 5.: K562 cell lysate  
Lane 6.: MCF7 cell lysate  
Lane 7.: LnCap cell lysate