

Human CTGF/CCN2 antibody

Catalog Number: ATGA0468

PRODUCT INFORMATION

Catalog number

ATGA0468

Clone No.

AT18E7

Product type

Monoclonal Antibody

UnitProt No.

P29279

NCBI Accession No.

NP_001892

Alternative Names

Connective tissue growth factor, CCN2, NOV2, HCS24, IGFBP8

PRODUCT SPECIFICATION

Antibody Host

Mouse

Reacts With

Human

Concentration

1mg/ml (determined by BCA assay)

Formulation

Liquid in. Phosphate-Buffered Saline (pH 7.4) with 0.02% Sodium Azide, 10% glycerol

Immunogen

Recombinant human CTGF (27-349 aa) purified from E. coli

Isotype

IgG2a kappa

Purification Note

By protein-A affinity chromatography

Application

ELISA, WB, ICC/IF

Usage

The antibody has been tested by ELISA, Western blot analysis and ICC/IF to assure specificity and reactivity. Since application varies, however, each investigation should be titrated by the reagent to obtain optimal results.

Storage

Human CTGF/CCN2 antibody

Catalog Number: ATGA0468

Can be stored at +2C to +8C for 1 week. For long term storage, aliquot and store at -20C to -80C. Avoid repeated freezing and thawing cycles.

BACKGROUND

Description

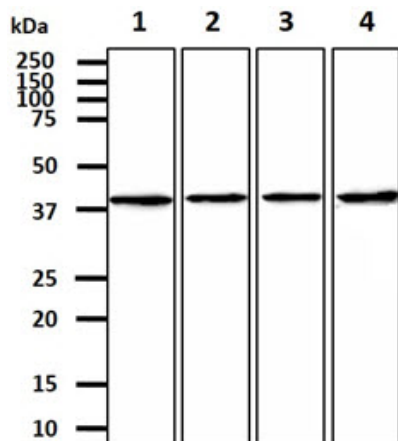
CTGF, also known as CCN2 or connective tissue growth factor, is a matricellular protein of the CCN family of extracellular matrix-associated heparin-binding proteins (see also CCN intercellular signaling protein). CTGF has important roles in many biological processes, including cell adhesion, migration, proliferation, angiogenesis, skeletal development, and tissue wound repair, and is critically involved in fibrotic disease and several forms of cancers.

General References

Jun JI., et al. (2011) Nat Rev Drug Discov. 10(12): 945-63.

DATA

Western blot analysis (WB)



The cell lysates (40ug) were resolved by SDS-PAGE, transferred to PVDF membrane and probed with anti-human CTGF antibody (1:1000). Proteins were visualized using a goat anti-mouse secondary antibody conjugated to HRP and an ECL detection system.

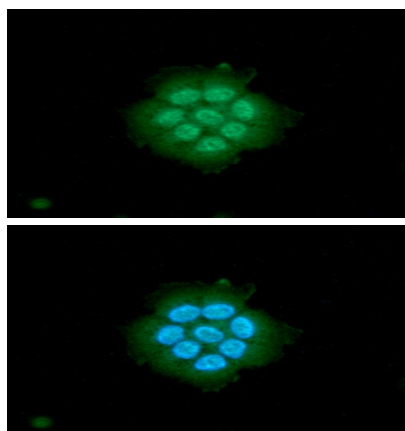
Lane 1.: Jurkat cell lysate

Lane 2.: A549 cell lysate

Lane 3.: U87MG cell lysate

Lane 4.: A427 cell lysate

Immunocytochemistry/Immunofluorescence (ICC/IF)



ICC/IF analysis of CTGF in Hep3B cells. The cell was stained with ATGA0468 (1:100). The secondary antibody (green) was used Alexa Fluor 488. DAPI was stained the cell nucleus (blue).