

Human SSU72 antibody

Catalog Number: ATGA0469

PRODUCT INFORMATION

Catalog number

ATGA0469

Clone No.

AT66D10

Product type

Monoclonal Antibody

UnitProt No.

Q9NP77

NCBI Accession No.

NP_054907

Alternative Names

SSu72 RNA polymerase II CTD phosphatase homolog, HSPC182, PNAS-120

PRODUCT SPECIFICATION

Antibody Host

Mouse

Reacts With

Human

Concentration

1mg/ml (determined by BCA assay)

Formulation

Liquid in. Phosphate-Buffered Saline (pH 7.4) with 0.02% Sodium Azide, 10% glycerol

Immunogen

Recombinant human SSU72 (1-194aa) purified from E. coli

Isotype

IgG2b kappa

Purification Note

By protein-A affinity chromatography

Application

ELISA, WB

Usage

The antibody has been tested by ELISA and Western blot analysis to assure specificity and reactivity. Since application varies, however, each investigation should be titrated by the reagent to obtain optimal results.

Storage

Human SSU72 antibody

Catalog Number: ATGA0469

Can be stored at +2C to +8C for 1 week. For long term storage, aliquot and store at -20C to -80C. Avoid repeated freezing and thawing cycles.

BACKGROUND

Description

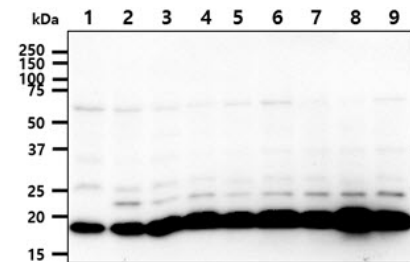
SSU72 RNA polymerase II CTD phosphatase homolog, also known as SSU72, is a highly conserved homologue of yeast Ssu72, a CTD phosphatase and a component of the polyadenylation/ termination machinery. Existing as multiple alternatively spliced isoforms, SSU72 interacts with TFIIB, Rb and DNAM-1 and functions to catalyze the dephosphorylation of target proteins, possibly playing a role in RNA processing and termination via dephosphorylation of Pol II.

General References

Dichtl B., et al. (2002) Mol Cell. 10: 1139-1150.
Krishnamurthy S., et al. (2004) Mol Cell. 14: 387-394.

DATA

Western blot analysis (WB)



The cell lysates (40ug) were resolved by SDS-PAGE, transferred to PVDF membrane and probed with anti-human SSU72 antibody (1:1000). Proteins were visualized using a goat anti-mouse secondary antibody conjugated to HRP and an ECL detection system.

Lane 1.: Jurkat cell lysate
Lane 2.: K562 cell lysate
Lane 3.: 293T cell lysate
Lane 4.: HepG2 cell lysate
Lane 5.: A549 cell lysate
Lane 6.: MCF-7 cell lysate
Lane 7.: SK-OV-3 cell lysate
Lane 8.: LnCap cell lysate
Lane 9.: HeLa cell lysate