

# Human SSU72 antibody

Catalog Number: ATGA0470

## PRODUCT INFORMATION

---

**Catalog number**

ATGA0470

**Clone No.**

AT45E2

**Product type**

Monoclonal Antibody

**UnitProt No.**

Q9NP77

**NCBI Accession No.**

NP\_054907

**Alternative Names**

SSu72 RNA polymerase II CTD phosphatase homolog, HSPC182, PNAS-120

## PRODUCT SPECIFICATION

---

**Antibody Host**

Mouse

**Reacts With**

Human

**Concentration**

1mg/ml (determined by BCA assay)

**Formulation**

Liquid in. Phosphate-Buffered Saline (pH 7.4) with 0.02% Sodium Azide, 10% glycerol

**Immunogen**

Recombinant human SSU72 (1-194aa) purified from E. coli

**Isotype**

IgG1 kappa

**Purification Note**

By protein-A affinity chromatography

**Application**

ELISA, WB

**Usage**

The antibody has been tested by ELISA and Western blot analysis to assure specificity and reactivity. Since application varies, however, each investigation should be titrated by the reagent to obtain optimal results.

**Storage**

# Human SSU72 antibody

Catalog Number: ATGA0470

Can be stored at +2C to +8C for 1 week. For long term storage, aliquot and store at -20C to -80C. Avoid repeated freezing and thawing cycles.

## BACKGROUND

### Description

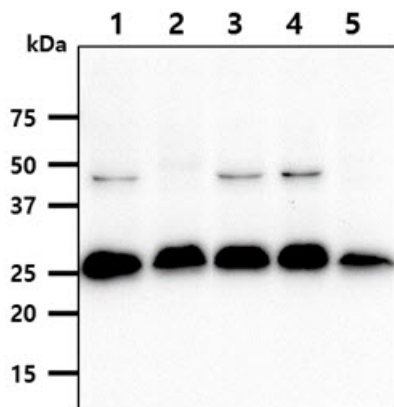
SSU72 RNA polymerase II CTD phosphatase homolog, also known as SSU72, is a highly conserved homologue of yeast Ssu72, a CTD phosphatase and a component of the polyadenylation/ termination machinery. Existing as multiple alternatively spliced isoforms, SSU72 interacts with TFIIB, Rb and DNAM-1 and functions to catalyze the dephosphorylation of target proteins, possibly playing a role in RNA processing and termination via dephosphorylation of Pol II.

### General References

Dichtl B., et al. (2002) Mol Cell. 10: 1139-1150.  
Krishnamurthy S., et al. (2004) Mol Cell. 14: 387-394.

## DATA

### Western blot analysis (WB)



The cell lysates (40ug) were resolved by SDS-PAGE, transferred to PVDF membrane and probed with anti-human SSU72 antibody (1:1000). Proteins were visualized using a goat anti-mouse secondary antibody conjugated to HRP and an ECL detection system.

Lane 1.: Jurkat cell lysate  
Lane 2.: K562 cell lysate  
Lane 3.: HeLa cell lysate  
Lane 4.: MCF7 cell lysate  
Lane 5.: LnCap cell lysate