

# Human RAB7A antibody

Catalog Number: ATGA0471

## PRODUCT INFORMATION

---

**Catalog number**

ATGA0471

**Clone No.**

AT10E4

**Product type**

Monoclonal Antibody

**UnitProt No.**

P51149

**NCBI Accession No.**

NP\_004628

**Alternative Names**

Ras-related protein Rab-7a, RAB7, RAB7A member RAS oncogene family, CMT2B, Charcot-Marie-Tooth neuropathy 2B

## PRODUCT SPECIFICATION

---

**Antibody Host**

Mouse

**Reacts With**

Human

**Concentration**

1mg/ml (determined by BCA assay)

**Formulation**

Liquid in. Phosphate-Buffered Saline (pH 7.4) with 0.02% Sodium Azide, 10% glycerol

**Immunogen**

Recombinant human RAB7A (1-207aa) purified from E. coli

**Isotype**

IgG2a kappa

**Purification Note**

By protein-A affinity chromatography

**Application**

ELISA, WB, ICC/IF, FACS

**Usage**

The antibody has been tested by ELISA, Western blot, ICC/IF and FACS analysis to assure specificity and reactivity. Since application varies, however, each investigation should be titrated by the reagent to obtain optimal results.

# Human RAB7A antibody

Catalog Number: ATGA0471

## Storage

Can be stored at +2C to +8C for 1 week. For long term storage, aliquot and store at -20C to -80C. Avoid repeated freezing and thawing cycles.

## BACKGROUND

### Description

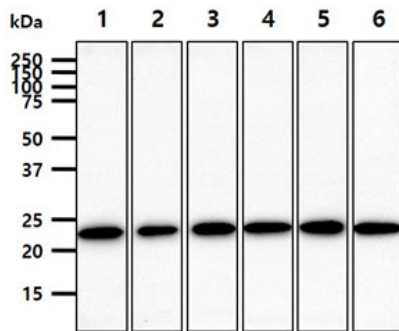
Ras-related protein Rab-7a, also known as RAB7A, is a member of the Ras superfamily of small Rab GTPases. RAB7A associates with the RIPL effector protein to control membrane trafficking from early to late endosome and to lysosomes. RAB7A has also been shown to regulate growth receptor endocytic trafficking, degradation, maturation of phagosome and autophagic vacuoles.

### General References

Feng Y., et al. (1995) J Cell Biol. 131: 1435-52.  
Barbero P., et al. (2002) J Cell Biol. 156: 511-8.

## DATA

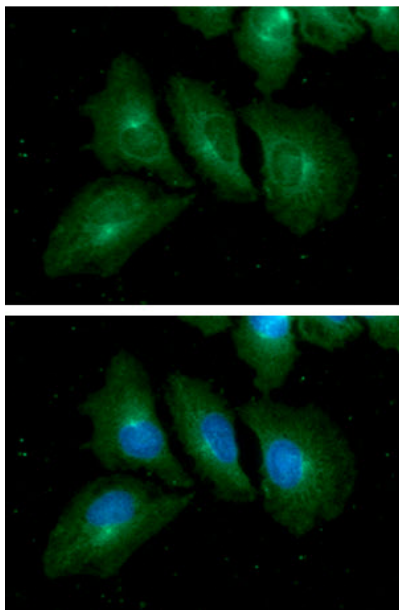
### Western blot analysis (WB)



The cell lysates (40ug) were resolved by SDS-PAGE, transferred to PVDF membrane and probed with anti-human RAB7A antibody (1:1000). Proteins were visualized using a goat anti-mouse secondary antibody conjugated to HRP and an ECL detection system.

Lane 1.: HeLa cell lysate  
Lane 2.: Jurkat cell lysate  
Lane 3.: MCF7 cell lysate  
Lane 4.: PC3 cell lysate  
Lane 5.: 293T cell lysate  
Lane 6.: SK-OV-3 cell lysate

### Immunocytochemistry/Immunofluorescence (ICC/IF)

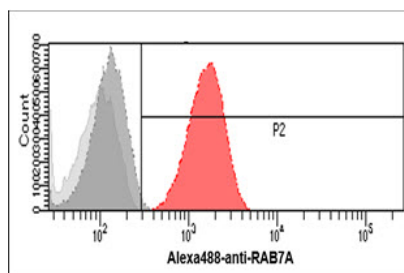


ICC/IF analysis of RAB7A in HeLa cells. The cell was stained with ATGA0471 (1:100). The secondary antibody (green) was used Alexa Fluor 488. DAPI was stained the cell nucleus (blue).

# Human RAB7A antibody

Catalog Number: ATGA0471

## Flow cytometry (FACS)



Flow cytometry analysis of RAB7A in HeLa cells. The cell was stained with ATGA0471 at 2-5ug for  $1 \times 10^6$  cells (red). A Goat anti mouse IgG (Alexa fluor 488) was used as the secondary antibody. Mouse monoclonal IgG was used as the isotype control (dark gray), cells without incubation with primary and secondary antibody was used as the negative control (light gray).