

Human Glutamine Synthetase antibody

Catalog Number: ATGA0474

PRODUCT INFORMATION

Catalog number

ATGA0474

Clone No.

AT8D7

Product type

Monoclonal Antibody

UnitProt No.

P15104

NCBI Accession No.

NP_001028216

Alternative Names

Glutamine synthase, Glutamate-ammonia ligase, GLNS, Glutamate-ammonia ligase, GS, Palmitoyltransferase
GLUL

PRODUCT SPECIFICATION

Antibody Host

Mouse

Reacts With

Human

Concentration

1mg/ml (determined by BCA assay)

Formulation

Liquid in. Phosphate-Buffered Saline (pH 7.4) with 0.02% Sodium Azide, 10% glycerol

Immunogen

Recombinant human GLUL (1-373aa) purified from E. coli

Isotype

IgG1 kappa

Purification Note

By protein-A affinity chromatography

Application

ELISA, WB, ICC/IF

Usage

The antibody has been tested by ELISA, Western blot analysis and ICC/IF to assure specificity and reactivity. Since application varies, however, each investigation should be titrated by the reagent to obtain optimal results.

Human Glutamine Synthetase antibody

Catalog Number: ATGA0474

Storage

Can be stored at +2C to +8C for 1 week. For long term storage, aliquot and store at -20C to -80C. Avoid repeated freezing and thawing cycles.

BACKGROUND

Description

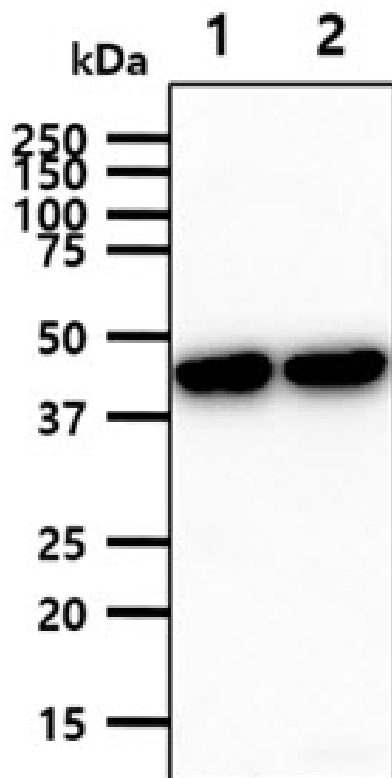
Glutamine synthetase (GLUL), which is therefore able to regulate intracellular concentrations of glutamate. GLUL catalyzes the synthesis of glutamine from glutamate and ammonia. Glutamine is a main source of energy and is involved in cell proliferation, inhibition of apoptosis, and cell signaling. GLUL is essential for proliferation of fetal skin fibroblasts and plays an important role in controlling body pH by removing ammonia from circulation. Mutations in GLUL are associated with congenital glutamine deficiency.

General References

Vermeulen T., et al, (2008) Arch Biochem Biophys. 478: 96-102.
Liaw SH., et al. (1995) Protein Sci. 4(11): 2358-65.

DATA

Western blot analysis (WB)

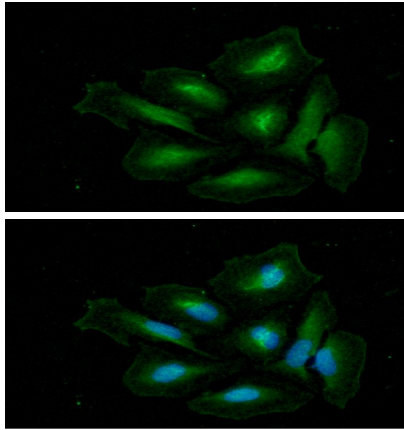


The mouse tissue lysates (40ug) were resolved by SDS-PAGE, transferred to PVDF membrane and probed with anti-human GLUL antibody (1:1000). Proteins were visualized using a goat anti-mouse secondary antibody conjugated to HRP and an ECL detection system.
Lane 1.: Mouse brain tissue lysate
Lane 2.: Mouse liver tissue lysate

Immunocytochemistry/Immunofluorescence (ICC/IF)

Human Glutamine Synthetase antibody

Catalog Number: ATGA0474



ICC/IF analysis of GLUL in HeLa cells. The cell was stained with ATGA0474 (1:100). The secondary antibody (green) was used Alexa Fluor 488. DAPI was stained the cell nucleus (blue).