

Human NM23-H2/NME2 antibody

Catalog Number: ATGA0475

PRODUCT INFORMATION

Catalog number

ATGA0475

Clone No.

AT2E3

Product type

Monoclonal Antibody

UnitProt No.

P22392

NCBI Accession No.

NP_001018149

Alternative Names

NME/NM23 nucleoside diphosphate kinase 2, Nucleoside diphosphate kinase B, C-myc purine-binding transcription factor PUF, Histidine protein kinase NDKB, NDK B, NDP kinase B, NM23B, NDPKB

PRODUCT SPECIFICATION

Antibody Host

Mouse

Reacts With

Human

Concentration

1mg/ml (determined by BCA assay)

Formulation

Liquid in. Phosphate-Buffered Saline (pH 7.4) with 0.02% Sodium Azide, 10% glycerol

Immunogen

Recombinant human NME2 (1-152aa) purified from E. coli

Isotype

IgG1 kappa

Purification Note

By protein-A affinity chromatography

Application

ELISA, WB, ICC/IF

Usage

The antibody has been tested by ELISA, Western blot and ICC/IF analysis to assure specificity and reactivity. Since application varies, however, each investigation should be titrated by the reagent to obtain optimal results.

Human NM23-H2/NME2 antibody

Catalog Number: ATGA0475

Storage

Can be stored at +2C to +8C for 1 week. For long term storage, aliquot and store at -20C to -80C. Avoid repeated freezing and thawing cycles.

BACKGROUND

Description

NME2, also known as NM23B, is a heterodimeric protein functioning as a nucleoside diphosphate (NDP) kinase. NME1 and NME2 comprise the 152 amino acid A and B polypeptide chains of the NM23 enzyme, respectively. NME2 is identical to the beta subunit of human erythrocyte NDP kinase. NDP kinases are involved in the synthesis of nucleoside triphosphates, and NM23 may act in the regulation of signal transduction by complexing with G proteins, causing activation/inactivation of developmental pathways.

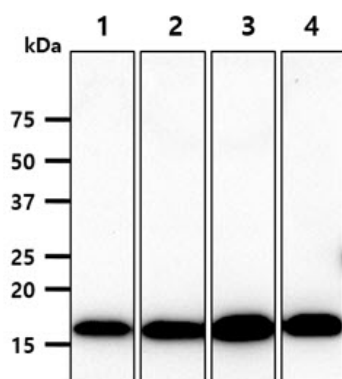
General References

Munkonge FM., et al. (2009) J Biol Chem. 284(39): 26978-87.

Treharne KJ., et al. (2009) FEBS Lett. 583(17): 2789-92.

DATA

Western blot analysis (WB)



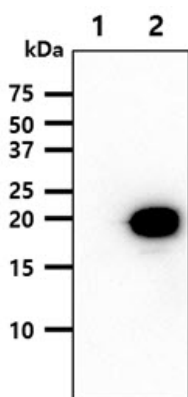
The cell lysates (40ug) were resolved by SDS-PAGE, transferred to PVDF membrane and probed with anti-human NME2 antibody (1:1000). Proteins were visualized using a goat anti-mouse secondary antibody conjugated to HRP and an ECL detection system.

Lane 1.: HeLa cell lysate

Lane 2.: A549 cell lysate

Lane 3.: MCF7 cell lysate

Lane 4.: LnCap cell lysate



The cell lysates (5ug) were resolved by SDS-PAGE, transferred to PVDF membrane and probed with anti-human NME2 antibody (1:1000). Proteins were visualized using a goat anti-mouse secondary antibody conjugated to HRP and an ECL detection system.

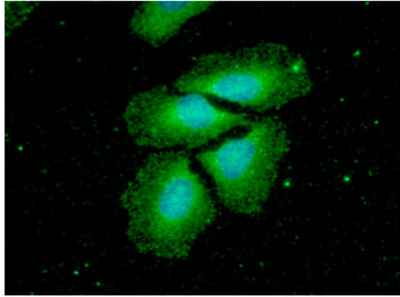
Lane 1.: 293T cell lysate

Lane 2.: NME2 transfected 293T cell lysate

Immunocytochemistry/Immunofluorescence (ICC/IF)

Human NM23-H2/NME2 antibody

Catalog Number: ATGA0475



ICC/IF analysis of NME2 in HeLa cells. The cell was stained with ATGA0475 (1:100). The secondary antibody (green) was used Alexa Fluor 488. DAPI was stained the cell nucleus (blue).