

Human TUBG1 antibody

Catalog Number: ATGA0479

PRODUCT INFORMATION

Catalog number

ATGA0479

Clone No.

AT9D6

Product type

Monoclonal Antibody

UnitProt No.

P23258

NCBI Accession No.

NP_001061

Alternative Names

Tubulin gamma-1 chain, GCP-1, TuBG, TuBGCP1

Additional Information

ATGA0344 has been replaced with a catalog number ATGA0479.

PRODUCT SPECIFICATION

Antibody Host

Mouse

Reacts With

Human

Concentration

1mg/ml (determined by BCA assay)

Formulation

Liquid in. Phosphate-Buffered Saline (pH 7.4) with 0.02% Sodium Azide, 10% glycerol

Immunogen

Recombinant human TUBG1 (1-451aa) purified from E. coli.

Isotype

IgG2b kappa

Purification Note

By protein-A affinity chromatography

Application

ELISA, WB, ICC/IF

Usage

The antibody has been tested by ELISA, Western blot analysis and ICC/IF to assure specificity and reactivity. Since application varies, however, each investigation should be titrated by the reagent to obtain optimal results.

Human TUBG1 antibody

Catalog Number: ATGA0479

Storage

Can be stored at +2C to +8C for 1 week. For long term storage, aliquot and store at -20C to -80C. Avoid repeated freezing and thawing cycles.

BACKGROUND

Description

TUBG1 is a member of the tubulin superfamily. This protein localizes to the centrosome where it binds to microtubules as part of a complex referred to as the gamma-tubulin ring complex. It mediates microtubule nucleation and is required for microtubule formation and progression of the cell cycle.

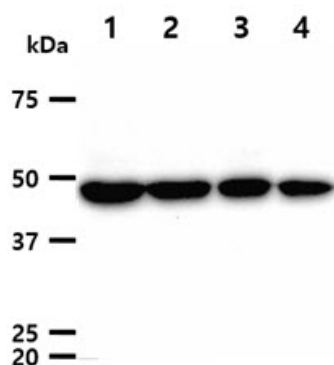
General References

Zheng Y., et al. (1991) Cell. 65(5): 817-23.

Wise DO., et al. (2000) Genomics. 67(2): 164-70.

DATA

Western blot analysis (WB)



The cell lysates (40ug) were resolved by SDS-PAGE, transferred to PVDF membrane and probed with anti-human TUBG1 antibody (1:1000). Proteins were visualized using a goat anti-mouse secondary antibody conjugated to HRP and an ECL detection system.

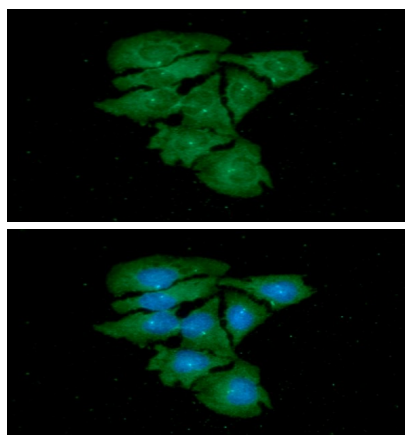
Lane 1.: HeLa cell lysate

Lane 2.: Jurkat cell lysate

Lane 3.: A549 cell lysate

Lane 4.: K562 cell lysate

Immunocytochemistry/Immunofluorescence (ICC/IF)



ICC/IF analysis of TUBG1 in HeLa cells. The cell was stained with ATGA0479 (1:100). The secondary antibody (green) was used Alexa Fluor 488. DAPI was stained the cell nucleus (blue).