

# Human MCM7 antibody

Catalog Number: ATGA0481

## PRODUCT INFORMATION

---

**Catalog number**

ATGA0481

**Clone No.**

AT118H7

**Product type**

Monoclonal Antibody

**UnitProt No.**

P33993

**NCBI Accession No.**

NP\_877577

**Alternative Names**

DNA replication licensing factor MCM7 isoform 2, CDC47, MCM2, P1.1-MCM3, P1CDC47, P85MCM, PNAS146

## PRODUCT SPECIFICATION

---

**Antibody Host**

Mouse

**Reacts With**

Human

**Concentration**

1mg/ml (determined by BCA assay)

**Formulation**

Liquid in. Phosphate-Buffered Saline (pH 7.4) with 0.02% Sodium Azide, 10% glycerol

**Immunogen**

Recombinant human MCM7 (1-414aa) purified from E. coli.

**Isotype**

IgG1 kappa

**Purification Note**

By protein-A affinity chromatography

**Application**

ELISA, WB, ICC/IF

**Usage**

The antibody has been tested by ELISA, Western blot analysis and ICC/IF to assure specificity and reactivity. Since application varies, however, each investigation should be titrated by the reagent to obtain optimal results.

**Storage**

# Human MCM7 antibody

Catalog Number: ATGA0481

Can be stored at +2C to +8C for 1 week. For long term storage, aliquot and store at -20C to -80C. Avoid repeated freezing and thawing cycles.

## BACKGROUND

### Description

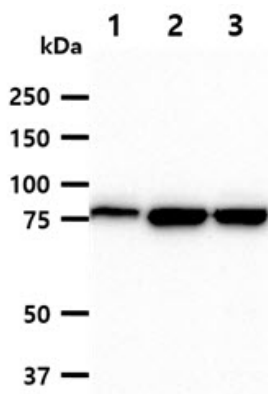
MCM7 is one of the highly conserved mini-chromosome maintenance proteins (MCM) that are essential for the initiation of eukaryotic genome replication. The hexameric protein complex formed by the MCM proteins is a key component of the pre-replication complex (pre\_RC) and may be involved in the formation of replication forks and in the recruitment of other DNA replication related proteins. The MCM complex consisting of this protein and MCM2, 4 and 6 proteins possesses DNA helicase activity, and may act as a DNA unwinding enzyme. Cyclin D1-dependent kinase, CDK4, is found to associate with this protein, and may regulate the binding of this protein with the tumorsuppressor protein RB1/RB.

### General References

Zhou Y.M., et al. (2012) *Liver Int.* 32(10): 1505-1509.  
Liu,Y.Liu Y.Z., et al. (2012) *Lung Cancer.* 77(1): 176-182.

## DATA

### Western blot analysis (WB)



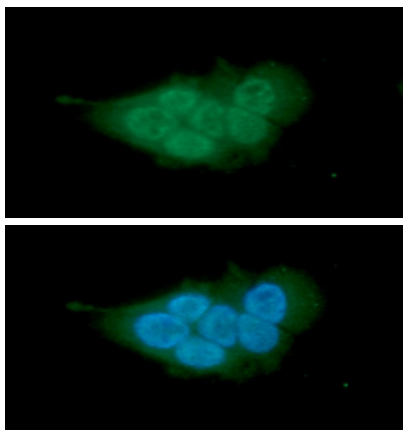
The cell lysates (40ug) were resolved by SDS-PAGE, transferred to PVDF membrane and probed with anti-human MCM7 antibody (1:1000). Proteins were visualized using a goat anti-mouse secondary antibody conjugated to HRP and an ECL detection system.

Lane 1.: HeLa cell lysate

Lane 2.: Jurkat cell lysate

Lane 3.: K562 cell lysate

### Immunocytochemistry/Immunofluorescence (ICC/IF)



ICC/IF analysis of MCM7 in MCF7 cells. The cell was stained with ATGA0481 (1:100). The secondary antibody (green) was used Alexa Fluor 488. DAPI was stained the cell nucleus (blue).