

# Human Integrin beta 1/CD29 antibody

Catalog Number: ATGA0485

## PRODUCT INFORMATION

---

**Catalog number**

ATGA0485

**Clone No.**

AT47E2

**Product type**

Monoclonal Antibody

**UnitProt No.**

P05556

**NCBI Accession No.**

NP\_002202

**Alternative Names**

Integrin beta 1, Integrin beta 1, CD29, FN1B, MDFA, VLAB, GPIIA, MSK12, Fibronectin receptor subunit beta, Glycoprotein IIA, GPIIA, VLA-4 subunit beta

## PRODUCT SPECIFICATION

---

**Antibody Host**

Mouse

**Reacts With**

Human

**Concentration**

1mg/ml (determined by BCA assay)

**Formulation**

Liquid in. Phosphate-Buffered Saline (pH 7.4) with 0.02% Sodium Azide, 10% glycerol

**Immunogen**

Recombinant human ITGB1 (21-461aa) purified from E. coli.

**Isotype**

IgG1 kappa

**Purification Note**

By protein-A affinity chromatography

**Application**

ELISA, WB, ICC/IF

**Usage**

The antibody has been tested by ELISA, Western blot analysis and ICC/IF to assure specificity and reactivity. Since application varies, however, each investigation should be titrated by the reagent to obtain optimal results.

# Human Integrin beta 1/CD29 antibody

Catalog Number: ATGA0485

## Storage

Can be stored at +2C to +8C for 1 week. For long term storage, aliquot and store at -20C to -80C. Avoid repeated freezing and thawing cycles.

## BACKGROUND

### Description

Integrins are heterodimeric proteins made up of alpha and beta subunits. At least 18 alpha and 8 beta subunits have been described in mammals. Integrin family members are membrane receptors involved in cell adhesion and recognition in a variety of processes including embryogenesis, hemostasis, tissue repair, immune response and metastatic diffusion of tumor cells. This gene encodes a beta subunit. Multiple alternatively spliced transcript variants which encode different protein isoforms have been found for this gene.

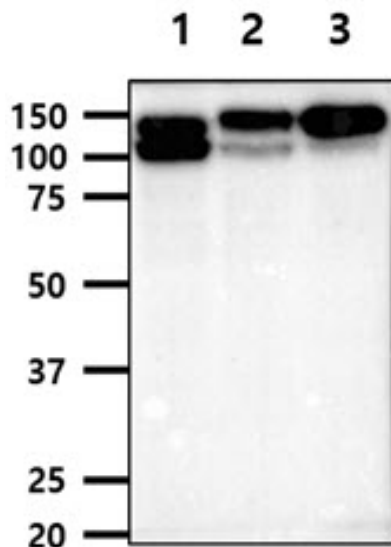
### General References

Pellinen T., et al. (2008) Dev. Cell. 15: 371-385.

Chuang N.N., et al. (2007) Biochem. Soc. Trans. 35:1292-1294.

## DATA

### Western blot analysis (WB)



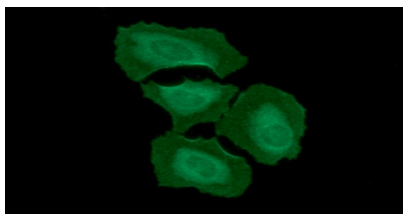
The cell lysates (40ug) were resolved by SDS-PAGE, transferred to PVDF membrane and probed with anti-human ITGB1 antibody (1:1000). Proteins were visualized using a goat anti-mouse secondary antibody conjugated to HRP and an ECL detection system.

Lane 1.: A549 cell lysate

Lane 2.: PC3 cell lysate

Lane 3.: HT1080 cell lysate

### Immunocytochemistry/Immunofluorescence (ICC/IF)



ICC/IF analysis of ITGB1 in HeLa cells. The cell was stained with ATGA0485 (1:100). The secondary antibody (green) was used Alexa Fluor 488. DAPI was stained the cell nucleus (blue).

## Human Integrin beta 1/CD29 antibody

Catalog Number: ATGA0485

