

Human FHL2 antibody

Catalog Number: ATGA0486

PRODUCT INFORMATION

Catalog number

ATGA0486

Clone No.

AT21D11

Product type

Monoclonal Antibody

UnitProt No.

Q14192

NCBI Accession No.

NP_001034581

Alternative Names

Four and a half LIM domains 2, AAG11, DRAL, FHL-2, SLIM-3, SLIM3

PRODUCT SPECIFICATION

Antibody Host

Mouse

Reacts With

Human

Concentration

1mg/ml (determined by BCA assay)

Formulation

Liquid in. Phosphate-Buffered Saline (pH 7.4) with 0.02% Sodium Azide, 10% glycerol

Immunogen

Recombinant human FHL2 (1-279aa) purified from E. coli.

Isotype

IgG1 kappa

Purification Note

By protein-A affinity chromatography

Application

ELISA, WB, ICC/IF

Usage

The antibody has been tested by ELISA, Western blot analysis and ICC/IF to assure specificity and reactivity. Since application varies, however, each investigation should be titrated by the reagent to obtain optimal results.

Storage

Human FHL2 antibody

Catalog Number: ATGA0486

Can be stored at +2C to +8C for 1 week. For long term storage, aliquot and store at -20C to -80C. Avoid repeated freezing and thawing cycles.

BACKGROUND

Description

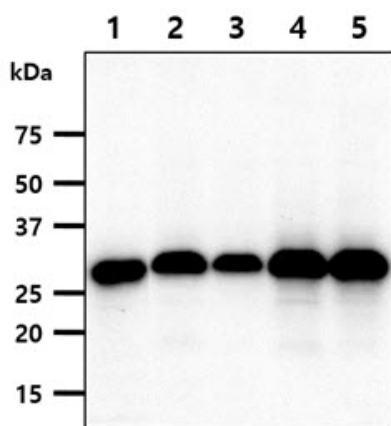
FHL2 is a member of the four-and-a-half-LIM-only protein family. Family members contain two highly conserved, tandemly arranged, zinc finger domains with four highly conserved cysteines binding a zinc atom in each zinc finger. This protein is thought to have a role in the assembly of extracellular membranes. Also, this gene is down-regulated during transformation of normal myoblasts to rhabdomyosarcoma cells and the encoded protein may function as a link between presenilin-2 and an intracellular signaling pathway. Multiple alternatively spliced variants, encoding the same protein, have been identified.

General References

Verset, L., et al. (2013) Br. J. Cancer. 109(1), 114-120.
Han, W., et al. (2013) J. Clin. Invest. 123(5), 2103-2118.

DATA

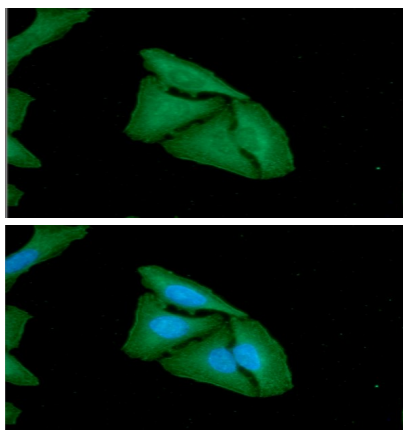
Western blot analysis (WB)



The cell lysates (40ug) were resolved by SDS-PAGE, transferred to PVDF membrane and probed with anti-human FHL2 antibody (1:1000). Proteins were visualized using a goat anti-mouse secondary antibody conjugated to HRP and an ECL detection system.

Lane 1.: HeLa cell lysate
Lane 2.: A549 cell lysate
Lane 3.: MCF7 cell lysate
Lane 4.: SK-OV-3 cell lysate
Lane 5.: HT1080 cell lysate

Immunofluorescence (ICC/IF)



ICC/IF analysis of FHL2 in HeLa cells. The cell was stained with ATGA0486 (1:100). The secondary antibody (green) was used Alexa Fluor 488. DAPI was stained the cell nucleus (blue).