

Human alpha-Fetoprotein/AFP antibody

Catalog Number: ATGA0488

PRODUCT INFORMATION

Catalog number

ATGA0488

Clone No.

AT73E10

Product type

Monoclonal Antibody

UnitProt No.

P02771

NCBI Accession No.

NP_001125

Alternative Names

Alpha-fetoprotein, AFPD, FETA, HPAFP

PRODUCT SPECIFICATION

Antibody Host

Mouse

Reacts With

Human

Concentration

1mg/ml (determined by BCA assay)

Formulation

Liquid in. Phosphate-Buffered Saline (pH 7.4) with 0.02% Sodium Azide, 10% glycerol

Immunogen

Recombinant human AFP (19-609aa) purified from insect cell.

Isotype

IgG1 kappa

Purification Note

By protein-A affinity chromatography

Application

ELISA, WB, ICC/IF, FACS

Usage

The antibody has been tested by ELISA, Western blot analysis, Flow cytometry and ICC/IF to assure specificity and reactivity. Since application varies, however, each investigation should be titrated by the reagent to obtain optimal results.

Human alpha-Fetoprotein/AFP antibody

Catalog Number: ATGA0488

Storage

Can be stored at +2C to +8C for 1 week. For long term storage, aliquot and store at -20C to -80C. Avoid repeated freezing and thawing cycles.

BACKGROUND

Description

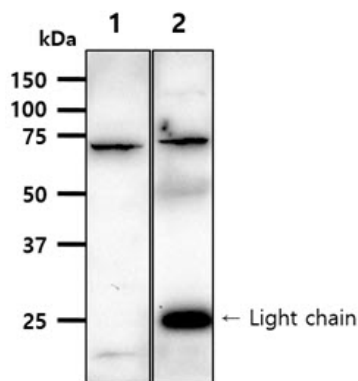
AFP, also known as alpha-fetoprotein, is a major plasma protein produced by the yolk sac and the liver during fetal development. It is thought to be the fetal form of serum albumin. This protein binds to copper, nickel, fatty acids and bilirubin. The main function of this is to prevent the virilization of female fetuses. As it does not bind estrogen, its function in humans is less clear.

General References

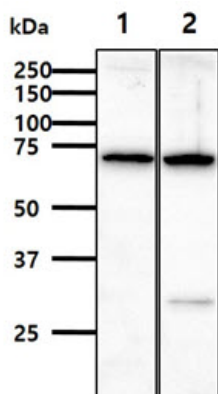
Tomasi TB Jr., (1997) Annu Rev Med. 28: 453-465.
Elbrecht A, et al. (1992) Science. 255: 467-470.

DATA

Western blot analysis (WB)



The cell and tissue lysates (40ug) were resolved by SDS-PAGE, transferred to PVDF membrane and probed with anti-human AFP antibody (1:500). Proteins were visualized using a goat anti-mouse secondary antibody conjugated to HRP and an ECL detection system.
Lane 1.: HepG2 cell lysate
Lane 2.: Mouse liver tissue lysate

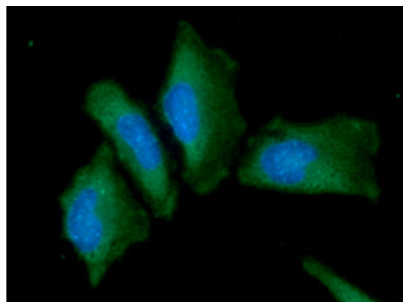


The cell lysates (40ug) were resolved by SDS-PAGE, transferred to PVDF membrane and probed with anti-human AFP antibody (1:1000). Proteins were visualized using a goat anti-mouse secondary antibody conjugated to HRP and an ECL detection system.
Lane 1.: Jurkat cell lysate
Lane 2.: Raw264.7 cell lysate

Immunocytochemistry/Immunofluorescence (ICC/IF)

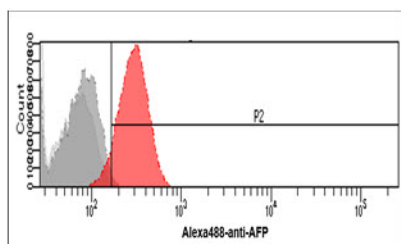
Human alpha-Fetoprotein/AFP antibody

Catalog Number: ATGA0488



ICC/IF analysis of AFP in HaLe cells. The cell was stained with ATGA0488 (1:100). The secondary antibody (green) was used Alexa Fluor 488. DAPI was stained the cell nucleus (blue).

Flow cytometry (FACS)



Flow cytometry analysis of AFP in HeLa cells. The cell was stained with ATGA0488 at 2-5ug for 1x10⁶ cells (red). A Goat anti mouse IgG (Alexa fluor 488) was used as the secondary antibody. Mouse monoclonal IgG was used as the isotype control (dark gray), cells without incubation with primary and secondary antibody was used as the negative control (light gray).