

Human MCM7 antibody

Catalog Number: ATGA0489

PRODUCT INFORMATION

Catalog number

ATGA0489

Clone No.

AT1G8

Product type

Monoclonal Antibody

UnitProt No.

P33993

NCBI Accession No.

NP_877577

Alternative Names

DNA replication licensing factor MCM7 isoform 2, CDC47, MCM2, P1.1-MCM3, P1CDC47, P85MCM, PNAS146

PRODUCT SPECIFICATION

Antibody Host

Mouse

Reacts With

Human

Concentration

1mg/ml (determined by BCA assay)

Formulation

Liquid in. Phosphate-Buffered Saline (pH 7.4) with 0.02% Sodium Azide, 10% glycerol

Immunogen

Recombinant human MCM7 (1-414aa) purified from E. coli.

Isotype

IgG2b kappa

Purification Note

By protein-A affinity chromatography

Application

ELISA, WB, FACS

Usage

The antibody has been tested by ELISA, Western blot analysis and Flow cytometry to assure specificity and reactivity. Since application varies, however, each investigation should be titrated by the reagent to obtain optimal results.

Human MCM7 antibody

Catalog Number: ATGA0489

Storage

Can be stored at +2C to +8C for 1 week. For long term storage, aliquot and store at -20C to -80C. Avoid repeated freezing and thawing cycles.

BACKGROUND

Description

MCM7 is one of the highly conserved mini-chromosome maintenance proteins (MCM) that are essential for the initiation of eukaryotic genome replication. The hexameric protein complex formed by the MCM proteins is a key component of the pre-replication complex (pre_RC) and may be involved in the formation of replication forks and in the recruitment of other DNA replication related proteins. The MCM complex consisting of this protein and MCM2, 4 and 6 proteins possesses DNA helicase activity, and may act as a DNA unwinding enzyme. Cyclin D1-dependent kinase, CDK4, is found to associate with this protein, and may regulate the binding of this protein with the tumorsuppressor protein RB1/RB.

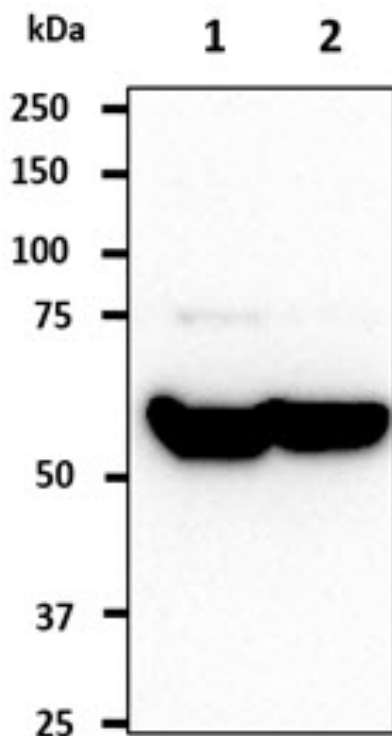
General References

Zhou,Y.M., et al. (2012) Liver Int. 32(10), 1505-1509.

Liu,Y.Z., et al. (2012) Lung Cancer 77(1), 176-182.

DATA

Western blot analysis (WB)



The cell lysates (40ug) were resolved by SDS-PAGE, transferred to PVDF membrane and probed with anti-human MCM7 antibody (1:1000). Proteins were visualized using a goat anti-mouse secondary antibody conjugated to HRP and an ECL detection system.

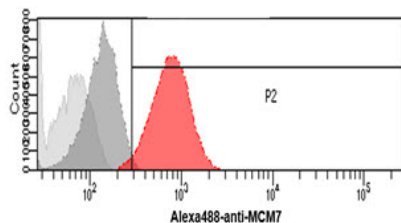
Lane 1.: HeLa cell lysate

Lane 2.: HepG2 cell lysate

Flow cytometry (FACS)

Human MCM7 antibody

Catalog Number: ATGA0489



Flow cytometry analysis of MCM7 in HeLa cells. The cell was stained with ATGA0489 at 2-5ug for 1x10⁶ cells (red). A Goat anti mouse IgG (Alexa fluor 488) was used as the secondary antibody. Mouse monoclonal IgG was used as the isotype control (dark gray), cells without incubation with primary and secondary antibody was used as the negative control (light gray).