

Human FIS1 antibody

Catalog Number: ATGA0490

PRODUCT INFORMATION

Catalog number

ATGA0490

Clone No.

AT3B7

Product type

Monoclonal Antibody

UnitProt No.

Q9Y3D6

NCBI Accession No.

NP_057152

Alternative Names

Mitochondrial fission 1 protein, FIS1 homolog, hFis1, Tetratricopeptide repeat protein 11, TPR repeat protein 11, TTC11, CGI-135 protein

PRODUCT SPECIFICATION

Antibody Host

Mouse

Reacts With

Human

Concentration

1mg/ml (determined by BCA assay)

Formulation

Liquid in. Phosphate-Buffered Saline (pH 7.4) with 0.02% Sodium Azide, 10% glycerol

Immunogen

Recombinant human TTC11 (1-122aa) purified from E. coli.

Isotype

IgG1 kappa

Purification Note

By protein-A affinity chromatography

Application

ELISA, WB, ICC/IF

Usage

The antibody has been tested by ELISA, Western blot analysis and ICC/IF to assure specificity and reactivity. Since application varies, however, each investigation should be titrated by the reagent to obtain optimal results.

Human FIS1 antibody

Catalog Number: ATGA0490

Storage

Can be stored at +2C to +8C for 1 week. For long term storage, aliquot and store at -20C to -80C. Avoid repeated freezing and thawing cycles.

BACKGROUND

Description

TTC11 is a component of a mitochondrial complex that promotes mitochondrial fission. This protein can induce cytochrome C release from the mitochondrion to the cytosol, ultimately leading to apoptosis. It is also involved in peroxisomal growth and division. The C terminus is required for mitochondrial localisation, while the N terminus is necessary for mitochondrial fission.

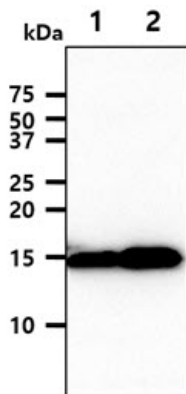
General References

Martinou J.C., et al. (2003) J Biol Chem. 278(38): 36373-9.

Yoon Y., et al. (2008) Exp Cell Res. 314(19): 3494-507.

DATA

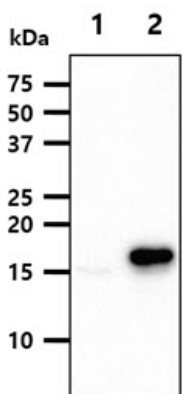
Western blot analysis (WB)



The cell lysates (40ug) were resolved by SDS-PAGE, transferred to PVDF membrane and probed with anti-human TTC11 antibody (1:1000). Proteins were visualized using a goat anti-mouse secondary antibody conjugated to HRP and an ECL detection system.

Lane 1.: HeLa cell lysate

Lane 2.: MCF7 cell lysate



The cell lysates (20ug) were resolved by SDS-PAGE, transferred to PVDF membrane and probed with anti-human TTC11 antibody (1:1000). Proteins were visualized using a goat anti-mouse secondary antibody conjugated to HRP and an ECL detection system.

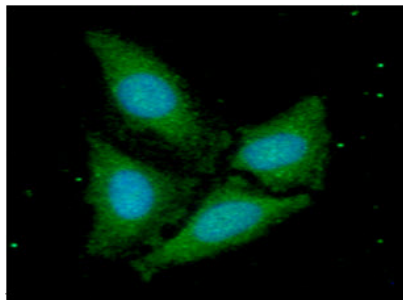
Lane 1.: 293T cell lysate

Lane 2.: TTC11 transfected 293T cell lysate

Immunocytochemistry/Immunofluorescence (ICC/IF)

Human FIS1 antibody

Catalog Number: ATGA0490



ICC/IF analysis of TTC11 in HaLa cells. The cell was stained with ATGA0490 (1:100). The secondary antibody (green) was used Alexa Fluor 488. DAPI was stained the cell nucleus (blue).