

# Human Sulfotransferase 2A1/SULT2A1 antibody

Catalog Number: ATGA0491

## PRODUCT INFORMATION

---

**Catalog number**

ATGA0491

**Clone No.**

AT13E10

**Product type**

Monoclonal Antibody

**UnitProt No.**

Q06520

**NCBI Accession No.**

NP\_003158

**Alternative Names**

Sulfotransferase family 2A member 1, ST2A1, Cytosolic sulfotransferase family 2A, Bile salt sulfotransferase, Dehydroepiandrosterone sulfotransferase, DHEA-ST, DHEA-ST8, Hydroxysteroid Sulfotransferase, HST, ST2, SULT2A3, STD

## PRODUCT SPECIFICATION

---

**Antibody Host**

Mouse

**Reacts With**

Human

**Concentration**

1mg/ml (determined by BCA assay)

**Formulation**

Liquid in. Phosphate-Buffered Saline (pH 7.4) with 0.02% Sodium Azide, 10% glycerol

**Immunogen**

Recombinant human SULT2A1 (1-285aa) purified from E.coli

**Isotype**

IgG2a kappa

**Purification Note**

By protein-A affinity chromatography

**Application**

ELISA, WB, ICC/IF

**Usage**

The antibody has been tested by Western blot analysis and ICC/IF to assure specificity and reactivity. Since application varies, however, each investigation should be titrated by the reagent to obtain optimal results.

# Human Sulfotransferase 2A1/SULT2A1 antibody

Catalog Number: ATGA0491

## Storage

Can be stored at +2C to +8C for 1 week. For long term storage, aliquot and store at -20C to -80C. Avoid repeated freezing and thawing cycles.

## BACKGROUND

### Description

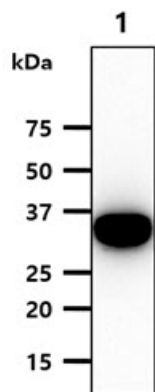
SULT2A1, also known dehydroepiandrosterone sulphotransferase, belongs to the sulfotransferase family. This protein is mainly expressed in liver and adrenal tissues, and to a lesser extent in kidney. It catalyzes the 3'-phosphoadenosine 5'-phosphosulfate-dependent sulfation of a wide variety of steroids in human liver and adrenal tissues, and is also responsible for most of the sulfation of bile acids in human liver.

### General References

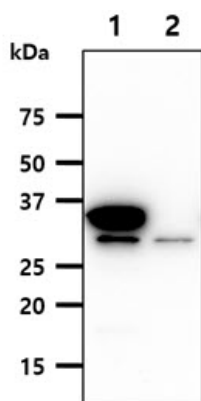
Otterness D.M. et al. (1992) Mol. Pharmacol. 41: 865-872.  
Comer K.A. et al. (1993) Biochem. J. 289: 233-240.

## DATA

### Western blot analysis (WB)



The cell lysates (40ug) were resolved by SDS-PAGE, transferred to PVDF membrane and probed with anti-human SULT2A1 antibody (1:1000). Proteins were visualized using a goat anti-mouse secondary antibody conjugated to HRP and an ECL detection system.  
Lane 1.: HepG2 cell lysate

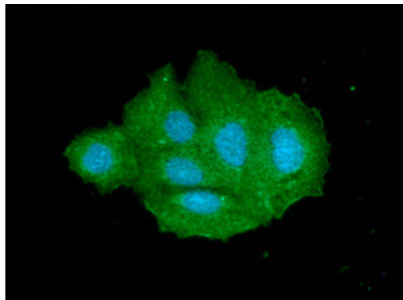


The cell lysates (40ug) were resolved by SDS-PAGE, transferred to PVDF membrane and probed with anti-human SULT2A1 antibody (1:1000). Proteins were visualized using a goat anti-mouse secondary antibody conjugated to HRP and an ECL detection system.  
Lane 1.: SULT2A1 transfected 293T cell lysate  
Lane 2.: 293T cell lysate

### Immunocytochemistry/Immunofluorescence (ICC/IF)

## Human Sulfotransferase 2A1/SULT2A1 antibody

Catalog Number: ATGA0491



ICC/IF analysis of SULT2A1 in Hep3B The cell was stained with ATGA0491 (1:100). The secondary antibody (green) was used Alexa Fluor 488. DAPI was stained the cell nucleus (blue).