

Human ATG3 antibody

Catalog Number: ATGA0493

PRODUCT INFORMATION

Catalog number

ATGA0493

Clone No.

AT15F6

Product type

Monoclonal Antibody

UnitProt No.

Q9NT62

NCBI Accession No.

NP_071933

Alternative Names

ubiquitin-like-conjugating enzyme ATG3 isoform 1, APG3, APG3-LIKE, APG3L, PC3-96

PRODUCT SPECIFICATION

Antibody Host

Mouse

Reacts With

Human

Concentration

1mg/ml (determined by BCA assay)

Formulation

Liquid in. Phosphate-Buffered Saline (pH 7.4) with 0.02% Sodium Azide, 10% glycerol

Immunogen

Recombinant human ATG3 (1-314aa) purified from E. coli.

Isotype

IgG1 kappa

Purification Note

By protein-A affinity chromatography

Application

ELISA, WB, FACS, ICC/IF

Usage

The antibody has been tested by ELISA, Western blot analysis, Flow cytometry and ICC/IF to assure specificity and reactivity. Since application varies, however, each investigation should be titrated by the reagent to obtain optimal results.

Human ATG3 antibody

Catalog Number: ATGA0493

Storage

Can be stored at +2C to +8C for 1 week. For long term storage, aliquot and store at -20C to -80C. Avoid repeated freezing and thawing cycles.

BACKGROUND

Description

Ubiquitin-like-conjugating enzyme ATG3 isoform 1, also known as ATG3, is an E2-like enzyme that localizes to the cytoplasm and is expressed in a variety of tissues with predominant levels found in kidney, placenta, liver, heart and skeletal muscle. ATG3 catalyzes the formation of the Atg8-phosphatidylethanolamine (ATG-PE) conjugate, a reaction that is essential for autophagy.

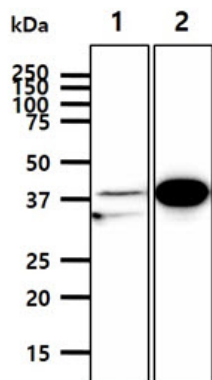
General References

Tanida I., et al. (2002) J Biol Chem. 277: 13739-13744.

Yamada Y., et al. (2007) J Biol Chem. 282: 8036-8043.

DATA

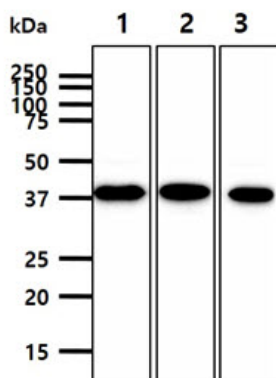
Western blot analysis (WB)



The cell lysates (40ug) were resolved by SDS-PAGE, transferred to PVDF membrane and probed with anti-human ATG3 antibody (1:1000). Proteins were visualized using a goat anti-mouse secondary antibody conjugated to HRP and an ECL detection system.

Lane 1.: 293T cell lysate

Lane 2.: ATG3 transfected 293T cell lysate



The cell lysates (40ug) were resolved by SDS-PAGE, transferred to PVDF membrane and probed with anti-human ATG3 antibody (1:1000). Proteins were visualized using a goat anti-mouse secondary antibody conjugated to HRP and an ECL detection system.

Lane 1.: K562 cell lysate

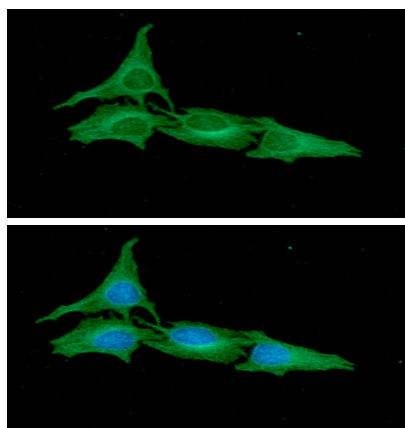
Lane 2.: Raji cell lysate

Lane 3.: Jurkat cell lysate

Immunocytochemistry/Immunofluorescence (ICC/IF)

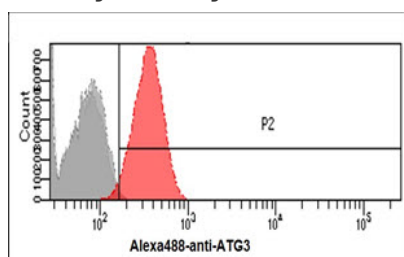
Human ATG3 antibody

Catalog Number: ATGA0493



ICC/IF analysis of ATG3 in HeLa cells. The cell was stained with ATGA0493 (1:100). The secondary antibody (green) was used Alexa Fluor 488. DAPI was stained the cell nucleus (blue).

Flow cytometry (FACS)



Flow cytometry analysis of ATG3 in HeLa cells. The cell was stained with ATGA0493 at 2-5ug for 1x10⁶ cells (red). A Goat anti mouse IgG (Alexa fluor 488) was used as the secondary antibody. Mouse monoclonal IgG was used as the isotype control (dark gray), cells without incubation with primary and secondary antibody was used as the negative control (light gray).