

Human PDHX antibody

Catalog Number: ATGA0494

PRODUCT INFORMATION

Catalog number

ATGA0494

Clone No.

AT1E11

Product type

Monoclonal Antibody

UnitProt No.

O00330

NCBI Accession No.

NP_003468

Alternative Names

Pyruvate dehydrogenase protein X component mitochondrial, Pyruvate dehydrogenase protein X component, mitochondrial, DLDBP, E3BP, OPDX, PDX1, proX

PRODUCT SPECIFICATION

Antibody Host

Mouse

Reacts With

Human

Concentration

1mg/ml (determined by BCA assay)

Formulation

Liquid in. Phosphate-Buffered Saline (pH 7.4) with 0.02% Sodium Azide, 10% glycerol

Immunogen

Recombinant human PDHX (54-501aa) purified from E. coli.

Isotype

IgG1 kappa

Purification Note

By protein-A affinity chromatography

Application

ELISA, WB

Usage

The antibody has been tested by ELISA and Western blot analysis to assure specificity and reactivity. Since application varies, however, each investigation should be titrated by the reagent to obtain optimal results.

Human PDHX antibody

Catalog Number: ATGA0494

Storage

Can be stored at +2C to +8C for 1 week. For long term storage, aliquot and store at -20C to -80C. Avoid repeated freezing and thawing cycles.

BACKGROUND

Description

The pyruvate dehydrogenase (PDH) complex is located in the mitochondrial matrix and catalyzes the conversion of pyruvate to acetyl coenzyme A. The PDH complex thereby links glycolysis to Krebs cycle. The PDH complex contains three catalytic subunits, E1, E2, and E3, two regulatory subunits, E1 kinase and E1 phosphatase, and a non-catalytic subunit, E3 binding protein (E3BP). This gene encodes the E3 binding protein subunit; also known as component X of the pyruvate dehydrogenase complex. This protein tethers E3 dimers to the E2 core of the PDH complex.

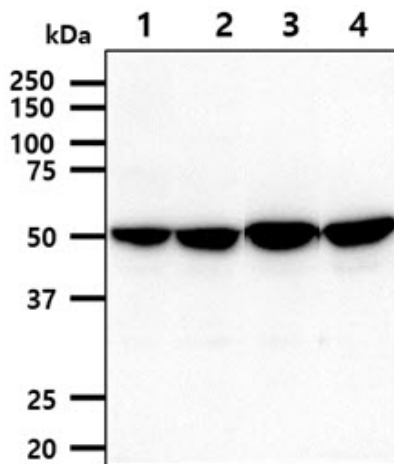
General References

Aral B., et al. (1997) Am. J. Hum. Genet. 61: 1318-1326.

Hiromasa Y., et al. (2004) J. Biol. Chem. 279: 6921-6933.

DATA

Western blot analysis (WB)



The cell lysates (40ug) were resolved by SDS-PAGE, transferred to PVDF membrane and probed with anti-human PDHX antibody (1:1000). Proteins were visualized using a goat anti-mouse secondary antibody conjugated to HRP and an ECL detection system.

Lane 1.: A431 cell lysate

Lane 2.: HepG2 cell lysate

Lane 3.: 293T cell lysate

Lane 4.: LnCap cell lysate