

Human MP1/LAMTOR3 antibody

Catalog Number: ATGA0503

PRODUCT INFORMATION

Catalog number

ATGA0503

Clone No.

AT1F10

Product type

Monoclonal Antibody

UnitProt No.

Q9UHA4

NCBI Accession No.

NP_068805

Alternative Names

Mitogen-activated protein kinase scaffold protein 1, MAP2K1IP1, MAPBP, MP1

PRODUCT SPECIFICATION

Antibody Host

Mouse

Reacts With

Human

Concentration

1mg/ml (determined by BCA assay)

Formulation

Liquid in. Phosphate-Buffered Saline (pH 7.4) with 0.02% Sodium Azide, 10% glycerol

Immunogen

Recombinant human MAPKSP1(1-124aa) purified from E. coli

Isotype

IgG2b kappa

Purification Note

By protein-A affinity chromatography

Application

ELISA, WB, ICC/IF

Usage

The antibody has been tested by ELISA, Western blot and ICC/IF analysis to assure specificity and reactivity. Since application varies, however, each investigation should be titrated by the reagent to obtain optimal results.

Storage

Human MP1/LAMTOR3 antibody

Catalog Number: ATGA0503

Can be stored at +2C to +8C for 1 week. For long term storage, aliquot and store at -20C to -80C. Avoid repeated freezing and thawing cycles.

BACKGROUND

Description

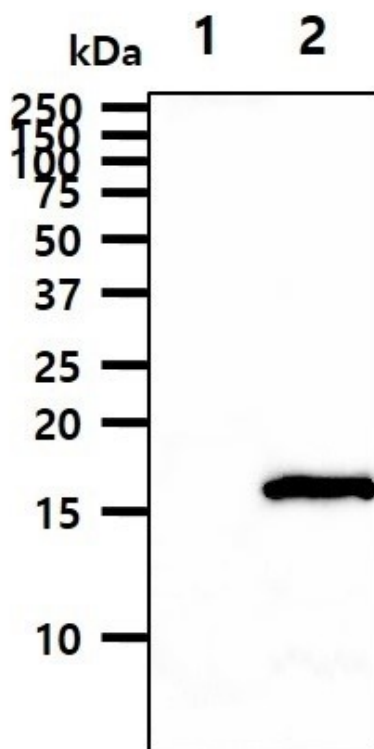
MAPKSP1 (Mitogen-activated protein kinase scaffold protein 1) is a scaffold protein that functions in the extracellular signal-regulated kinase (ERK) cascade. The protein is localized to late endosomes by the mitogen-activated protein-binding protein-interacting protein, and binds specifically to MAP kinase kinase MAP2K1/MEK1, MAP kinase MAPK3/ERK1, and MAP kinase MAPK1/ERK2.

General References

Wunderlich, et al. (2001) J. Cell Biol. (United States) 152 (4): 765-76.
Schaeffer HJ, et al. (1998) Science 281 (5383): 1668-71.

DATA

Western blot analysis (WB)

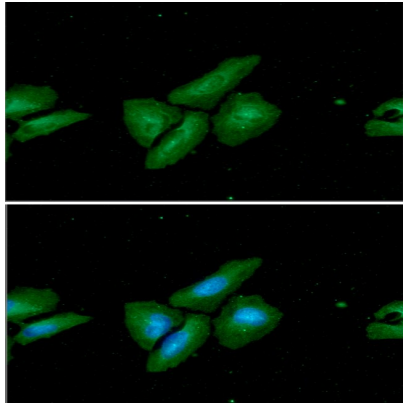


The cell lysates (40ug) were resolved by SDS-PAGE, transferred to PVDF membrane and probed with anti-human MP1 antibody (1:500). Proteins were visualized using a goat anti-mouse secondary antibody conjugated to HRP and an ECL detection system.
Lane 1.: 293T cell lysate
Lane 2.: MAPKSP1 transfected 293T cell lysate

Immunocytochemistry/Immunofluorescence (ICC/IF)

Human MP1/LAMTOR3 antibody

Catalog Number: ATGA0503



ICC/IF analysis of MP1 in HaLa cells. The cell was stained with ATGA0503 (1:100). The secondary antibody (green) was used Alexa Fluor 488. DAPI was stained the cell nucleus (blue).