

Human Calcineurin A/PPP3CA antibody

Catalog Number: ATGA0505

PRODUCT INFORMATION

Catalog number

ATGA0505

Clone No.

AT1E11

Product type

Monoclonal Antibody

UnitProt No.

Q08209

NCBI Accession No.

NP_001124163

Alternative Names

Protein phosphatase 3 catalytic subunit alpha, CAM-PRP catalytic subunit, Calcineurin A alpha, Calmodulin-dependent calcineurin A subunit alpha isoform, CNA alpha, Serine/threonine-protein phosphatase 2B catalytic subunit alpha isoform, CALNA, CALN, CNA, CNA1, PPP2B

PRODUCT SPECIFICATION

Antibody Host

Mouse

Reacts With

Human

Concentration

1mg/ml (determined by BCA assay)

Formulation

Liquid in. Phosphate-Buffered Saline (pH 7.4) with 0.02% Sodium Azide, 10% glycerol

Immunogen

Recombinant human PPP3CA (1-511aa) purified from E. coli

Isotype

IgG2b kappa

Purification Note

By protein-A affinity chromatography

Application

ELISA, WB, ICC/IF

Usage

The antibody has been tested by ELISA, Western blot and ICC/IF analysis to assure specificity and reactivity. Since application varies, however, each investigation should be titrated by the reagent to obtain optimal results.

Human Calcineurin A/PPP3CA antibody

Catalog Number: ATGA0505

Storage

Can be stored at +2C to +8C for 1 week. For long term storage, aliquot and store at -20C to -80C. Avoid repeated freezing and thawing cycles.

BACKGROUND

Description

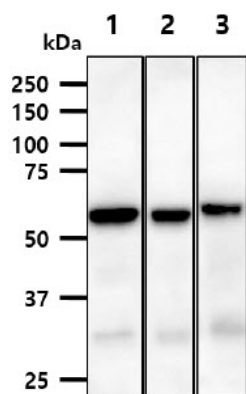
PPP3CA, also known as Calcineurin A, is a major soluble calmodulin binding protein in the brain, a Ca²⁺/calmodulin dependent serine/threonine protein phosphatase, with a relatively narrow substrate specificity. It activates the T cells of the immune system and can be blocked by drugs. PPP3CA activates NFATc, a transcription factor by dephosphorylating it. The activated NFATc is then translocated into the nucleus, where it upregulates the expression of interleukin 2.

General References

Ostenfeld MS., et al. (2010) *Oncogene*. 29(7):1073-84.
Rodriguez A., et al. (2009) *Mol Cell*. 33(5):616-26.

DATA

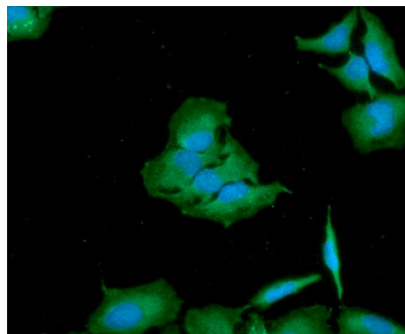
Western blot analysis (WB)



The cell lysates (40ug) were resolved by SDS-PAGE, transferred to PVDF membrane and probed with anti-human PPP3CA antibody (1:1000). Proteins were visualized using a goat anti-mouse secondary antibody conjugated to HRP and an ECL detection system.

Lane 1.: HeLa cell lysate
Lane 2.: 293T cell lysate
Lane 3.: LNCaP cell lysate

Immunocytochemistry/Immunofluorescence (ICC/IF)



ICC/IF analysis of PPP3CA in HeLa cells. The cell was stained with ATGA0505 (1:100). The secondary antibody (green) was used Alexa Fluor 488. DAPI was stained the cell nucleus (blue).