

Human Actin/ACTA1 antibody

Catalog Number: ATGA0517

PRODUCT INFORMATION

Catalog number

ATGA0517

Clone No.

AT2F5

Product type

Monoclonal antibody

UnitProt No.

P68133

NCBI Accession No.

NP_001091

Alternative Names

ACTA, ACTA1, Actin, alpha 1, Alpha actin 1, Alpha skeletal muscle, Alpha skeletal muscle actin, ASMA, CFTD, CFTDM, MPFD, NEM1, NEM2, NEM3, Skeletal muscle

PRODUCT SPECIFICATION

Antibody Host

Mouse

Reacts With

Human

Concentration

1mg/ml (determined by BCA assay)

Formulation

Liquid in. Phosphate-Buffered Saline (pH 7.4) with 0.02% Sodium Azide, 10% glycerol

Immunogen

Recombinant human Actin (13-377aa) purified from E.coli

Isotype

IgG2a kappa

Purification Note

By protein-A affinity chromatography

Application

ELISA, WB, ICC/IF

Usage

The antibody has been tested by ELISA, Western blot analysis and ICC/IF to assure specificity and reactivity. Since application varies, however, each investigation should be titrated by the reagent to obtain optimal results.

Human Actin/ACTA1 antibody

Catalog Number: ATGA0517

Storage

Can be stored at +2C to +8C for 1 week. For long term storage, aliquot and store at -20C to -80C. Avoid repeated freezing and thawing cycles.

BACKGROUND

Description

ACTA1 belongs to the actin family of proteins, which are highly conserved proteins that play a role in cell motility, structure and integrity. Alpha, beta and gamma actin isoforms have been identified, with alpha actins being a major constituent of the contractile apparatus, while beta and gamma actins are involved in the regulation of cell motility. This actin is an alpha actin that is found in skeletal muscle. Defects in this gene cause aortic aneurysm familial thoracic type 6. Multiple alternatively spliced variants, encoding the same protein, have been identified.

General References

Moreno CAM , et al., (2017) *Pediatr. Neurol.* 75: 11-16.

Loumaye A ,et al., (2017) *J Cachexia Sarcopenia Muscle* 8 (5): 768-777.

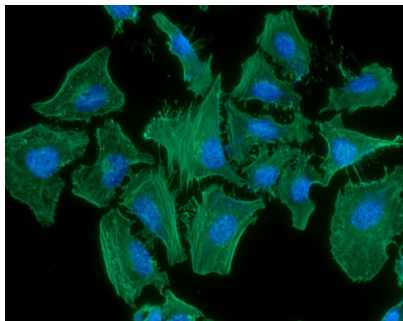
DATA

Western blot analysis (WB)



The tissue and cell lysates (40ug) were resolved by SDS-PAGE, transferred to PVDF membrane and probed with anti-human Actin antibody (1:1000). Proteins were visualized using a goat anti-mouse secondary antibody conjugated to HRP and an ECL detection system. Lane 1.: Mouse Lung Tissue lysate
Lane 2.: HeLa cell lysate
Lane 3.: A549 cell lysate
Lane 4.: A431 cell lysate
Lane 5.: Raji cell lysate

Immunocytochemistry/Immunofluorescence (ICC/IF)



ICC/IF analysis of Actin in HeLa cells. The cell was stained with ATGA0517 (1:100). The secondary antibody (green) was used Alexa Fluor 488. DAPI was stained the cell nucleus (blue).