

# Human RAB5A antibody

Catalog Number: ATGA0519

## PRODUCT INFORMATION

---

**Catalog number**

ATGA0519

**Clone No.**

3A4

**Product type**

Monoclonal antibody

**UnitProt No.**

P20339

**NCBI Accession No.**

NP\_004153

**Alternative Names**

RAB5A member RAS oncogene family, Ras-related protein Rab-5A, RAS-associated protein RAB5A, RAB5

**Additional Information**

This product was produced from tissue culture supernatant.

## PRODUCT SPECIFICATION

---

**Antibody Host**

Mouse

**Reacts With**

Human

**Concentration**

1mg/ml (determined by BCA assay)

**Formulation**

Liquid in. Phosphate-Buffered Saline (pH 7.4) with 0.02% Sodium Azide, 10% glycerol

**Immunogen**

Recombinant human Rab5a (1-215aa) purified from E. coli.

**Isotype**

IgG2b kappa

**Purification Note**

By protein-A affinity chromatography

**Application**

ELISA, WB, ICC/IF

**Usage**

The antibody has been tested by ELISA, Western blot analysis and ICC/IF to assure specificity and reactivity. Since application varies, however, each investigation should be titrated by the reagent to obtain optimal results.

# Human RAB5A antibody

Catalog Number: ATGA0519

## Storage

Can be stored at +2C to +8C for 1 week. For long term storage, aliquot and store at -20C to -80C. Avoid repeated freezing and thawing cycles.

## BACKGROUND

### Description

Rab5a is a member of the RAS oncogene family. Rab5a is a small GTPase localized to the plasma membrane and early endosomes. It is a crucial regulatory component of the endocytic pathway. Activation of Rab5a is mediated by GDP-GTP exchange factors (GEFs) that generate the Rab5-GTP complex.

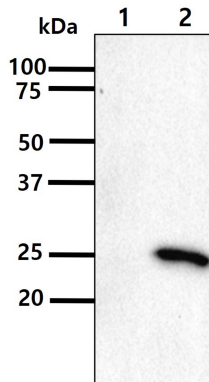
### General References

Bucci C, et al., (1992) Cell 70 (5): 715-28

Seachrist JL, et al., (2002) J. Biol. Chem. 277 (1): 679-85

## DATA

### Western blot analysis (WB)

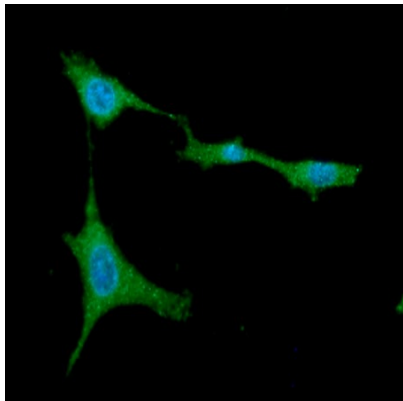


The cell lysates(40ug) were resolved by SDS-PAGE, transferred to PVDF membrane and probed with anti-human Rab5a antibody (1:1000). Proteins were visualized using a goat anti-mouse secondary antibody conjugated to HRP and an ECL detection system.

Lane 1.: 293T cell lysate

Lane 2.: Rab5a Transfected 293T cell lysate

### Immunocytochemistry/Immunofluorescence (ICC/IF)



ICC/IF analysis of Rab5a in U87MG cells. The cell was stained with ATGA0519 (1:100). The secondary antibody (green) was used Alexa Fluor 488. DAPI was stained the cell nucleus (blue).