

Human FABP1/L-FABP antibody

Catalog Number: ATGA0521

PRODUCT INFORMATION

Catalog number

ATGA0521

Clone No.

2G4

Product type

Monoclonal antibody

UnitProt No.

P07148

NCBI Accession No.

NP_001434

Alternative Names

Fatty acid binding protein 1, Fatty acid-binding protein, liver, FABPL, L-FABP, FABP1, Fatty acid binding protein 1, fatty acid binding protein 1 liver

Additional Information

This product was produced from tissue culture supernatant.

PRODUCT SPECIFICATION

Antibody Host

Mouse

Reacts With

Human

Concentration

1mg/ml (determined by BCA assay)

Formulation

Liquid in. Phosphate-Buffered Saline (pH 7.4) with 0.02% Sodium Azide, 10% glycerol

Immunogen

Recombinant human FABP1/L-FABP (1-127aa) purified from E. coli

Isotype

IgG1 kappa

Purification Note

By protein-A affinity chromatography

Application

ELISA, WB, ICC/IF

Usage

The antibody has been tested by ELISA, Western blot and ICC/IF analysis to assure specificity and reactivity.

Human FABP1/L-FABP antibody

Catalog Number: ATGA0521

Since application varies, however, each investigation should be titrated by the reagent to obtain optimal results.

Storage

Can be stored at +2C to +8C for 1 week. For long term storage, aliquot and store at -20C to -80C. Avoid repeated freezing and thawing cycles.

BACKGROUND

Description

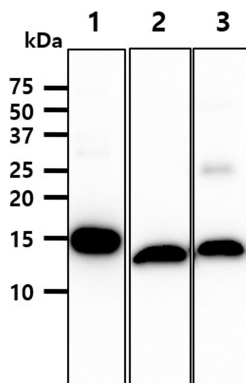
FABP1 (Fatty acid binding protein1) encodes the fatty acid binding protein found in liver. FABP1 is composed of ten antiparallel beta strands that form a barrel with a bigger binding pocket than the other FABPs allowing it to accommodate two fatty acid. This protein binds free fatty acids and their coenzyme A derivatives, bilirubin, and some other small molecules in the cytoplasm; it may be involved in intracellular lipid transport and metabolism.

General References

Atshaves BP, et al: (2004) Mol Cell Biochem. 259(1-2), 115-29
Nakamura T, et al: (2005) Diabestes Care. 28(11), 2728-32

DATA

Western blot analysis (WB)



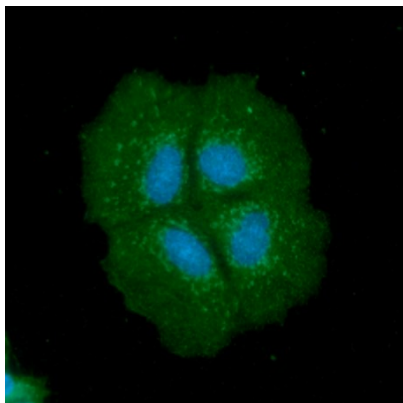
The Recombinant protein (50ng) and Cell lysates (40ug) were resolved by SDS-PAGE, transferred to PVDF membrane and probed with anti-human FABP1/L-FABP antibody (1:1000). Proteins were visualized using a goat anti-mouse secondary antibody conjugated to HRP and an ECL detection system.

Lane 1.: Recombinant human FABP1/L-FABP protein

Lane 2.: HepG2 cell lysate

Lane 3.: Mouse Liver tissue lysate

Immunocytochemistry/Immunofluorescence (ICC/IF)



ICC/IF analysis of FABP1/L-FABP in Hep3B cells. The cell was stained with ATGA0521 (1:100). The secondary antibody (green) was used Alexa Fluor 488. DAPI was stained the cell nucleus (blue).