

Human NKp46/NCR1 antibody

Catalog Number: ATGA0526

PRODUCT INFORMATION

Catalog number

ATGA0526

Clone No.

n1D9

Product type

Monoclonal Antibody

UnitProt No.

O76036

NCBI Accession No.

NP_004820

Alternative Names

Natural cytotoxicity triggering receptor 1 isoform a, NCR1, LY94, NCR, NKp46 Extracellular Ig-like domain, Natural killer cell p46-related protein, hNKp46, NK-p46, NKp46, NK cell-activating receptor, Lymphocyte antigen 94 homolog, CD335 antigen, Natural cytotoxicity triggering receptor 1, Natural cytotoxicity triggering receptor 1 isoform a

Additional Information

This product was produced from tissue culture supe

PRODUCT SPECIFICATION

Antibody Host

Mouse

Reacts With

Human

Concentration

1mg/ml (determined by BCA assay)

Formulation

Liquid in. Phosphate-Buffered Saline (pH 7.4) with 0.02% Sodium Azide, 10% glycerol

Immunogen

Recombinant human Nkp46/NCR1 (22-255aa) purified from E. coli.

Isotype

IgG1 kappa

Purification Note

Application

ELISA, FACS

Human NKp46/NCR1 antibody

Catalog Number: ATGA0526

Usage

The antibody has been tested by ELISA and Flow cytometry to assure specificity and reactivity. Since application varies, however, each investigation should be titrated by the reagent to obtain optimal results.

Storage

Can be stored at +2C to +8C for 1 week. For long term storage, aliquot and store at -20C to -80C. Avoid repeated freezing and thawing cycles.

BACKGROUND

Description

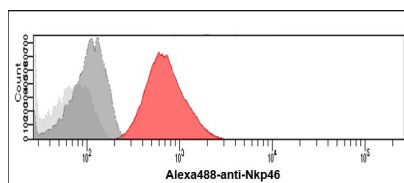
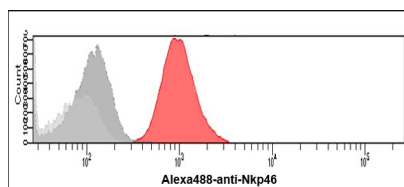
A natural cytotoxicity receptor (NCR), Nkp46, is a glycoprotein that has two extracellular Ig-like domains followed by a ~40 residue stalk region, a type I transmembrane domain, and a short cytoplasmic tail. Nkp46 has been shown to represent a novel Nk cell-specific molecule involved in human Nk cell activation. The natural cytotoxicity receptors (NCRs) are a recently characterized family of Ig-like activation receptors that appear to be major triggering receptors in tumor cell recognition. Nkp46 has been implicated in Nk cell-mediated lysis of several autologous tumor cells and pathogen-infected cell lines.

General References

Sivori, S. et al., (1997) J. Exp. Med. 186:1125-36.
Pessino, A. et al., (1998) J. Exp. Med. 188:953-60.

DATA

Flow cytometry (FACS)



Flow cytometry analysis of NKp46/NCR1 in PBMC. The cell was stained with ATGA0526 at 2-5ug for 1×10^6 cells (red). A Goat anti mouse IgG (Alexa fluor 488) was used as the secondary antibody. Mouse monoclonal IgG was used as the isotype control (darkgray), cells without incubation with primary and secondary antibody was used as the negative control (light gray).

Flow cytometry analysis of NKp46/NCR1 in HeLa cells. The cell was stained with ATGA0526 at 2-5ug for 1×10^6 cells (red). A Goat anti mouse IgG (Alexafluor 488) was used as the secondary antibody. Mouse monoclonal IgG was used as the isotype control (dark gray), cells without incubation with primary and secondary antibody was used as the negative control (light gray).