

Human RASSF1A antibody

Catalog Number: ATGA0528

PRODUCT INFORMATION

Catalog number

ATGA0528

Clone No.

AT3F3

Product type

Monoclonal antibody

UnitProt No.

Q9NS23

NCBI Accession No.

NP_009113

Alternative Names

RASSF1(Ras association (RalGDS/AF-6) domain family 1),123F2, RDA32, NORE2A, RASSF1A, REH3P21, Ras association (RalGDS/AF-6) domain family member 1

Additional Information

This product was produced from tissue culture supernatant.

PRODUCT SPECIFICATION

Antibody Host

Mouse

Reacts With

Human

Concentration

1mg/ml (determined by BCA assay)

Formulation

Liquid in. Phosphate-Buffered Saline (pH 7.4) with 0.02% Sodium Azide, 10% glycerol

Immunogen

Recombinant human RASSF1A (1-340aa) purified from E. coli.

Isotype

IgG1 kappa

Purification Note

By protein-A affinity chromatography

Application

ELISA, WB, ICC/IF

Usage

The antibody has been tested by ELISA, Western blot and ICC/IF analysis to assure specificity and reactivity.

Human RASSF1A antibody

Catalog Number: ATGA0528

Since application varies, however, each investigation should be titrated by the reagent to obtain optimal results.

Storage

Can be stored at +2C to +8C for 1 week. For long term storage, aliquot and store at -20C to -80C. Avoid repeated freezing and thawing cycles.

BACKGROUND

Description

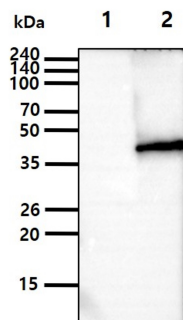
The tumor suppressor gene RASSF1A (3p21.3), human Ras association domain family 1A, is expressed in heart, brain, placenta, lung, liver, skeletal muscle, kidney, pancreas, spleen, thymus, prostate, testis, small intestine, colon, and peripheral blood leukocytes. RASSF1A expression is inhibited by hypermethylation of the CpG island including the promoter and early transcribed regions of the human RASSF1A gene. Hypermethylated RASSF1A promoter is observed in primary tumors. Furthermore, RASSF1A is related with cell cycle regulation, apoptosis and microtubule stability.

General References

- Agathangelou A, et al., (2005) Cancer Res. 65, 3497-3508.
- Lerman MI. et. al. (2000) Cancer Res. 60, 6116-6133.
- Strunnikova M. et al., (2005) Mol Cell Biol. 25, 3923-3933.
- Dammann R. et al., (2005) Histol Histopathol. 20, 645-663.
- Rossa W.k, et al., (2007) American Journal of pathology. 170, 941-950.

DATA

Western blot analysis (WB)

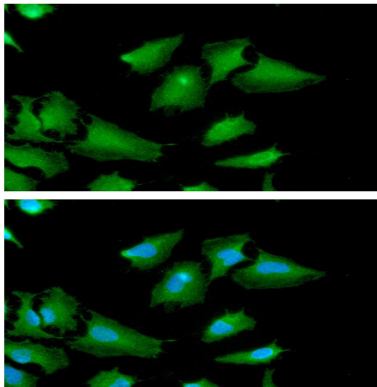


The cell lysates(5ug) were resolved by SDS-PAGE, transferred to PVDF membrane and probed with anti-human RASSF1A antibody (1:500). Proteins were visualized using a goat anti-mouse secondary antibody conjugated to HRP and an ECL detection system.
Lane 1.: 293T cell lysate
Lane 2.: RASSF1A Transfected 293T cell lysate

Immunocytochemistry/Immunofluorescence (ICC/IF)

Human RASSF1A antibody

Catalog Number: ATGA0528



ICC/IF analysis of RASSF1A in HeLa cells. The cell was stained with ATGA0528 (1:100). The secondary antibody (green) was used Alexa Fluor 488. DAPI was stained the cell nucleus (blue).