

# Human Leptin/OB antibody

Catalog Number: ATGA0536

## PRODUCT INFORMATION

---

**Catalog number**

ATGA0536

**Clone No.**

AT7E10

**Product type**

Monoclonal antibody

**UnitProt No.**

P41159

**NCBI Accession No.**

NP\_000221

**Alternative Names**

LEP, OB, OBS, Leptin, Obesity factor, Obese protein, Leptin, Leptin Murine Obesity Homolog, LeptinPrecursor Obesity Factor, Obesity, Obesity homolog mouse, Obesity Murine Homolog Leptin,

**Additional Information**

This product was produced from tissue culture supernatant.

## PRODUCT SPECIFICATION

---

**Antibody Host**

Mouse

**Reacts With**

Human

**Concentration**

1mg/ml (determined by BCA assay)

**Formulation**

Liquid in. Phosphate-Buffered Saline (pH 7.4) with 0.02% Sodium Azide, 10% glycerol

**Immunogen**

Recombinant human Leptin/OB (22-167aa) purified from E. coli.

**Isotype**

IgG2b kappa

**Purification Note**

By protein-A affinity chromatography

**Application**

ELISA, WB, ICC/IF

**Usage**

The antibody has been tested by ELISA, Western blot and ICC/IF analysis to assure specificity and reactivity.

# Human Leptin/OB antibody

Catalog Number: ATGA0536

Since application varies, however, each investigation should be titrated by the reagent to obtain optimal results.

## Storage

Can be stored at +2C to +8C for 1 week. For long term storage, aliquot and store at -20C to -80C. Avoid repeated freezing and thawing cycles.

## BACKGROUND

### Description

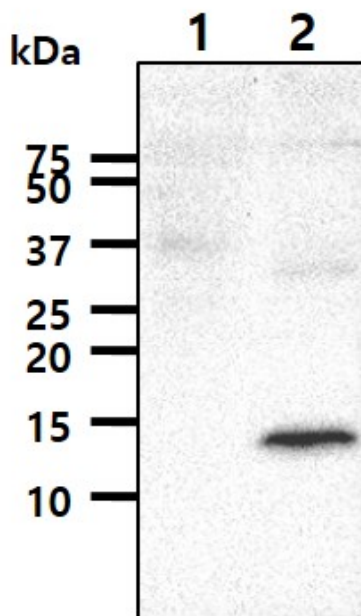
Human leptin is a 16-kDa nonglycosylated hormone that is produced in mature adipocytes. Leptin acts primarily in the hypothalamus to reduce food intake and body weight. In ob/ob mice, the gene encoding leptin is mutated, resulting in morbid obesity and associated abnormalities, including hyperphagia, hypothermia, diabetes and infertility. The function of leptin in regulating appetite and metabolism, as well as the possibility of using leptin as a therapeutic agent, are currently under intense investigation.

### General References

- Anini Y., et al. (2003) Diabetes. 52(2): 252-259.
- Jeong KJ., et al. (1999) Appl Environ Microbiol. 65(7): 3027-32.
- Hyogo H., et al. (2002) J. Biol. Chem. 277(37): 34117-34124.

## DATA

### Western blot analysis (WB)



The cell lysates(40ug) were resolved by SDS-PAGE, transferred to PVDF membrane and probed with anti-human Leptin/OB antibody (1:1000). Proteins were visualized using a goat anti-mouse secondary antibody conjugated to HRP and an ECL detection system.

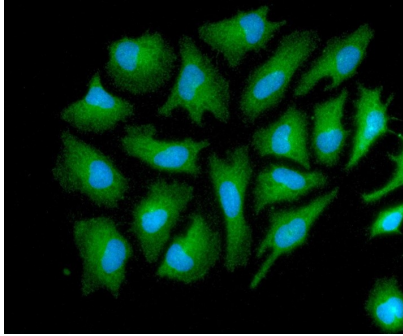
Lane 1.: 293T cell lysate

Lane 2.: Leptin/OB Transfected 293T cell lysate

### Immunocytochemistry/Immunofluorescence (ICC/IF)

## Human Leptin/OB antibody

Catalog Number: ATGA0536



ICC/IF analysis of Leptin/OB in HeLa cells. The cell was stained with ATGA0536 (1:100). The secondary antibody (green) was used Alexa Fluor 488. DAPI was stained the cell nucleus (blue).